

Images of RS12 (*Picea*-whittling) residues
used in Blind Test 1

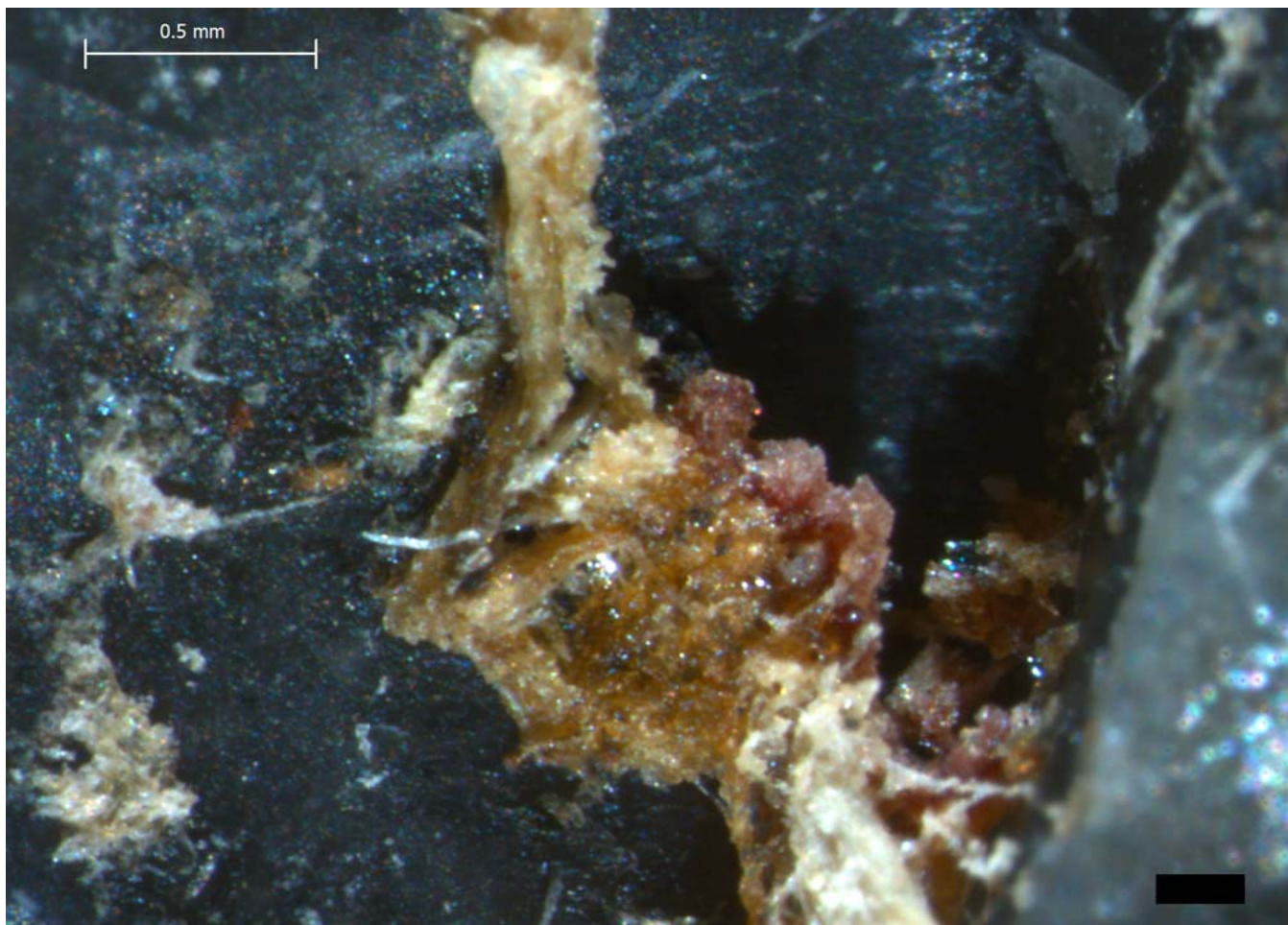
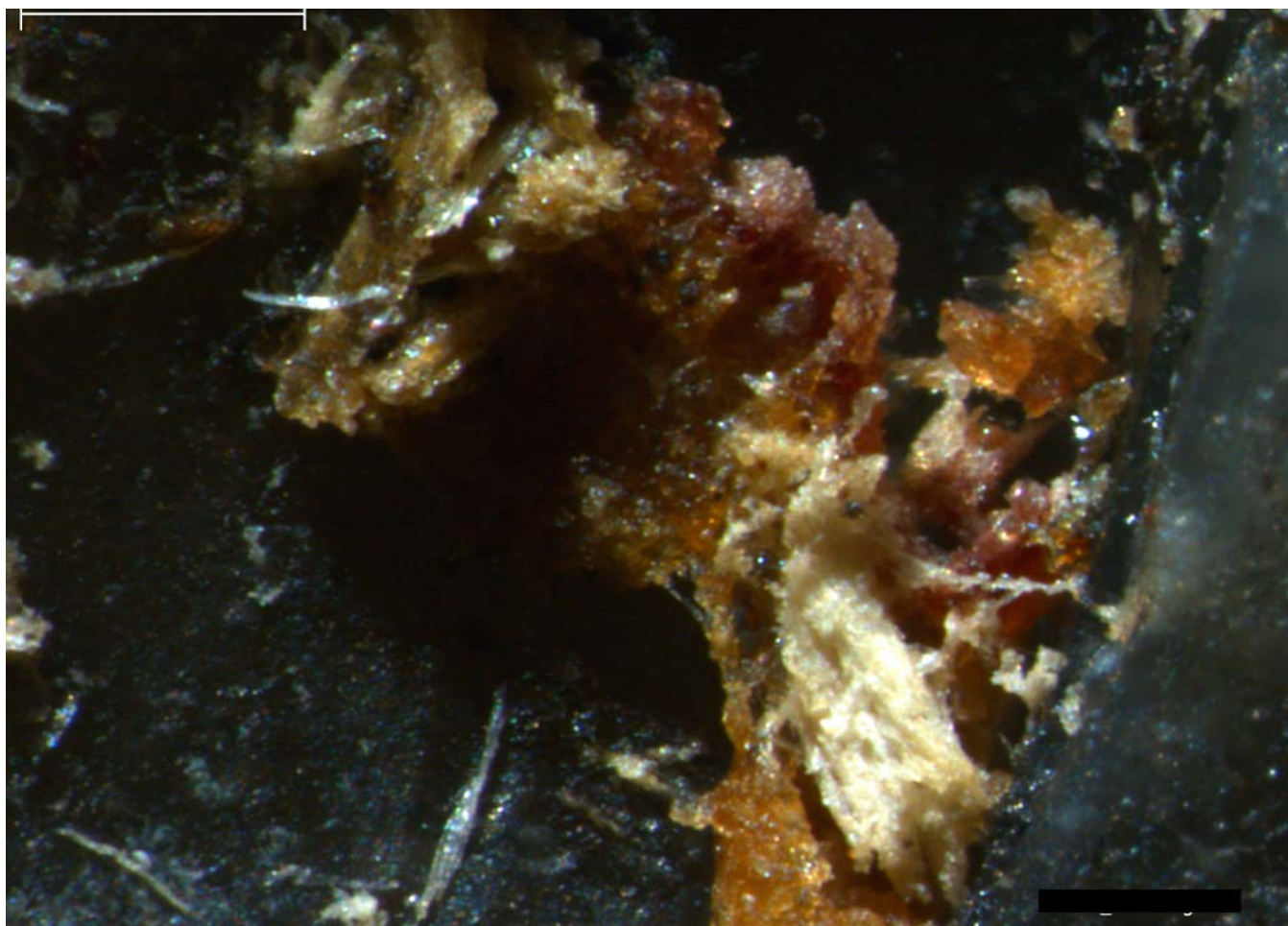
The images published in this pdf are those that were used in the testing portion of the experiment reported in Monnier et al. 2012, *J. Arch. Sci.* For questions, please contact Gilliane Monnier at monni003@umn.edu.

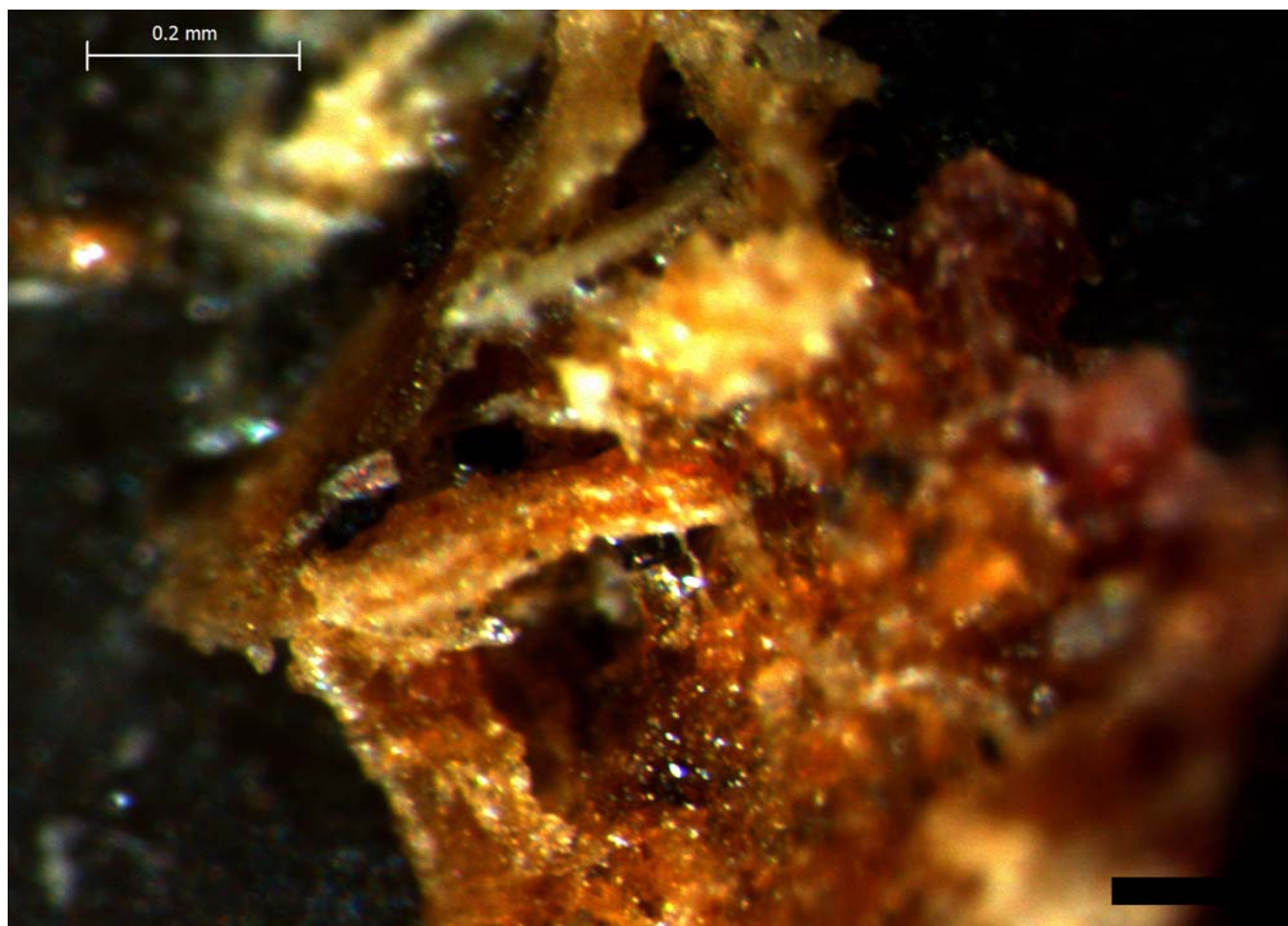
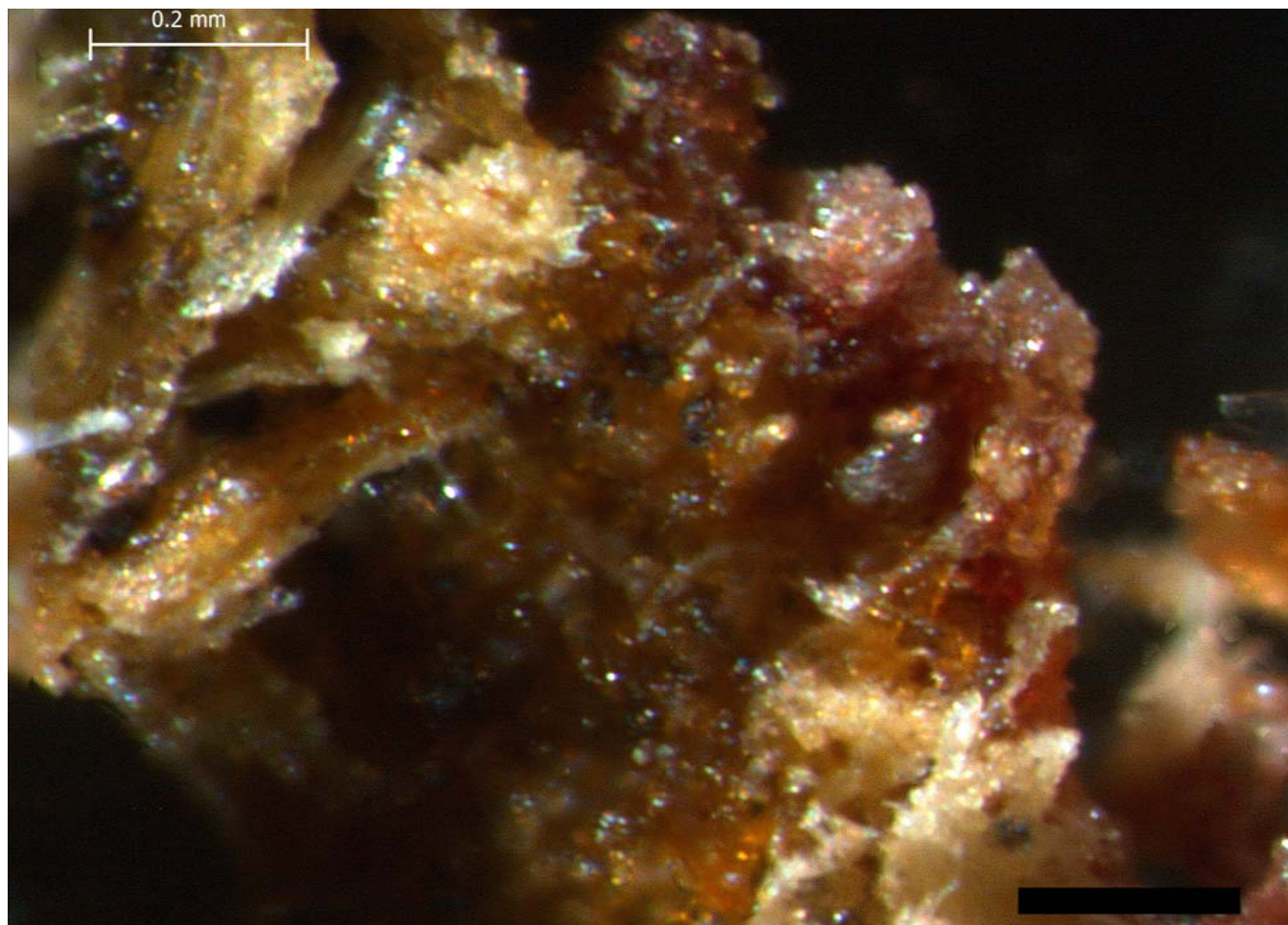
Naming conventions: 'RS' = Residue Study; 'D' = Dorsal side; 'V' = Ventral side; 'a', 'b', etc. = residue number.

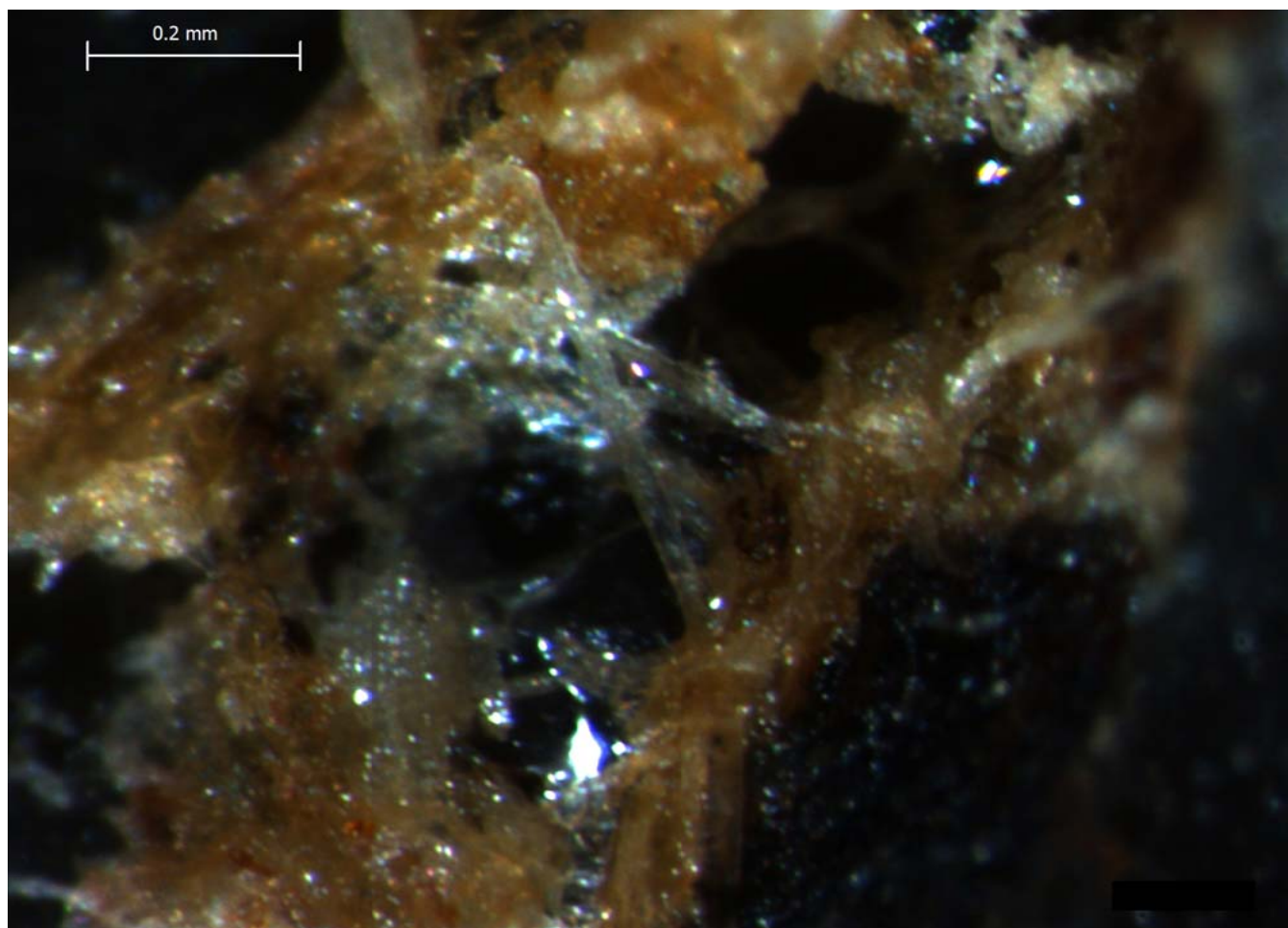
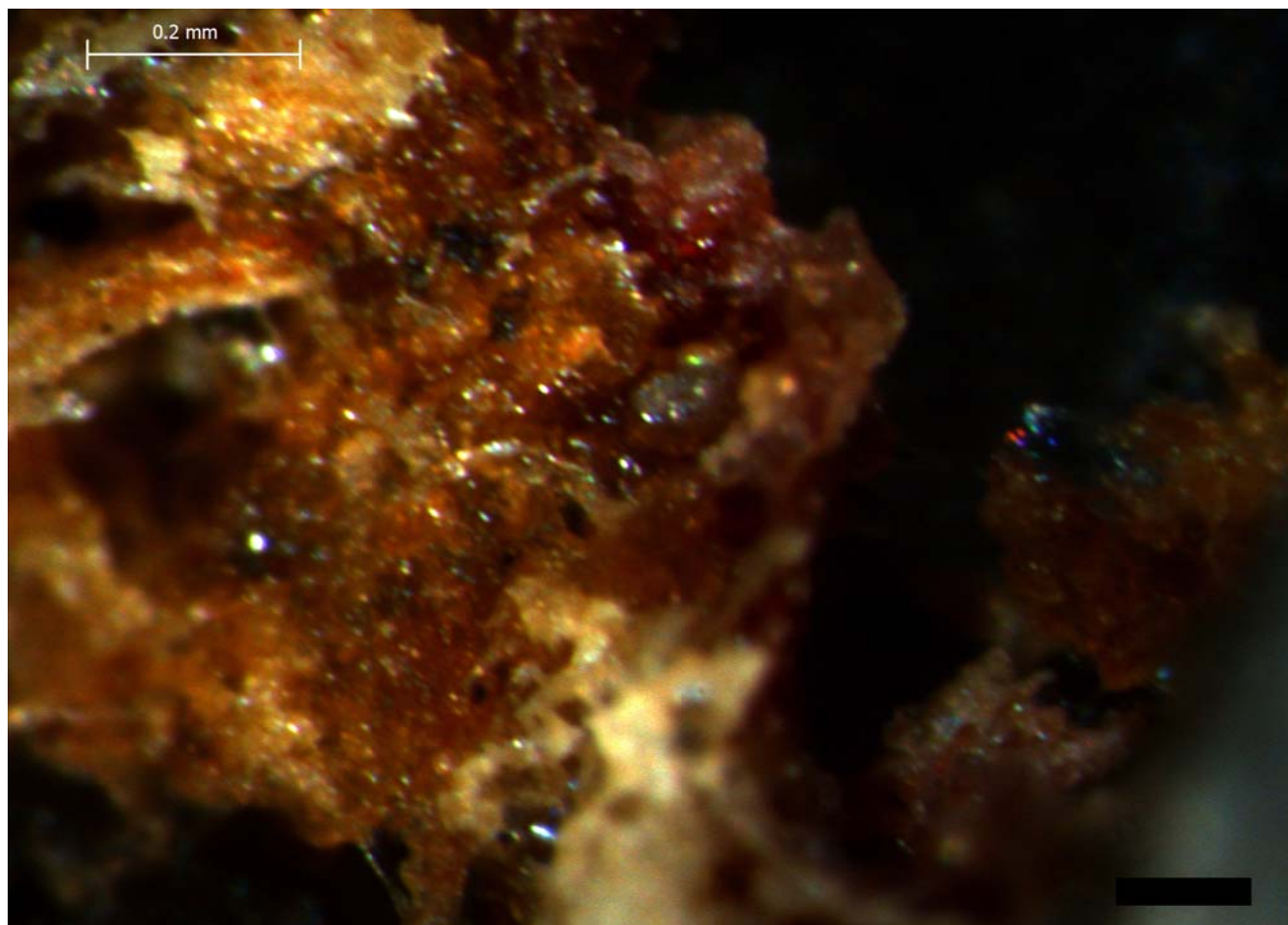
For example, "3Db" refers to tool RS3, residue "b" on the dorsal surface.

Blind Test 1

Residue 12Da



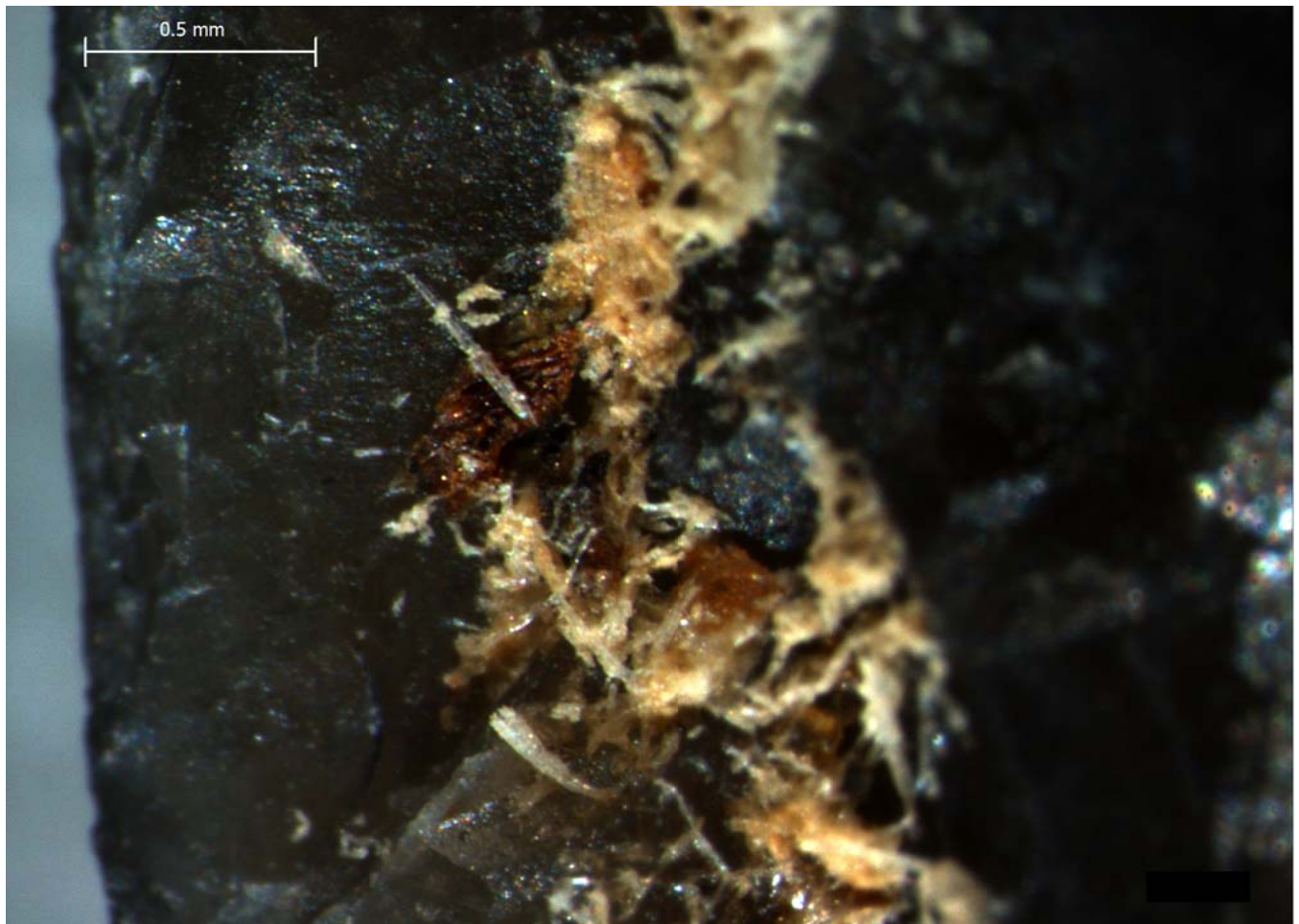
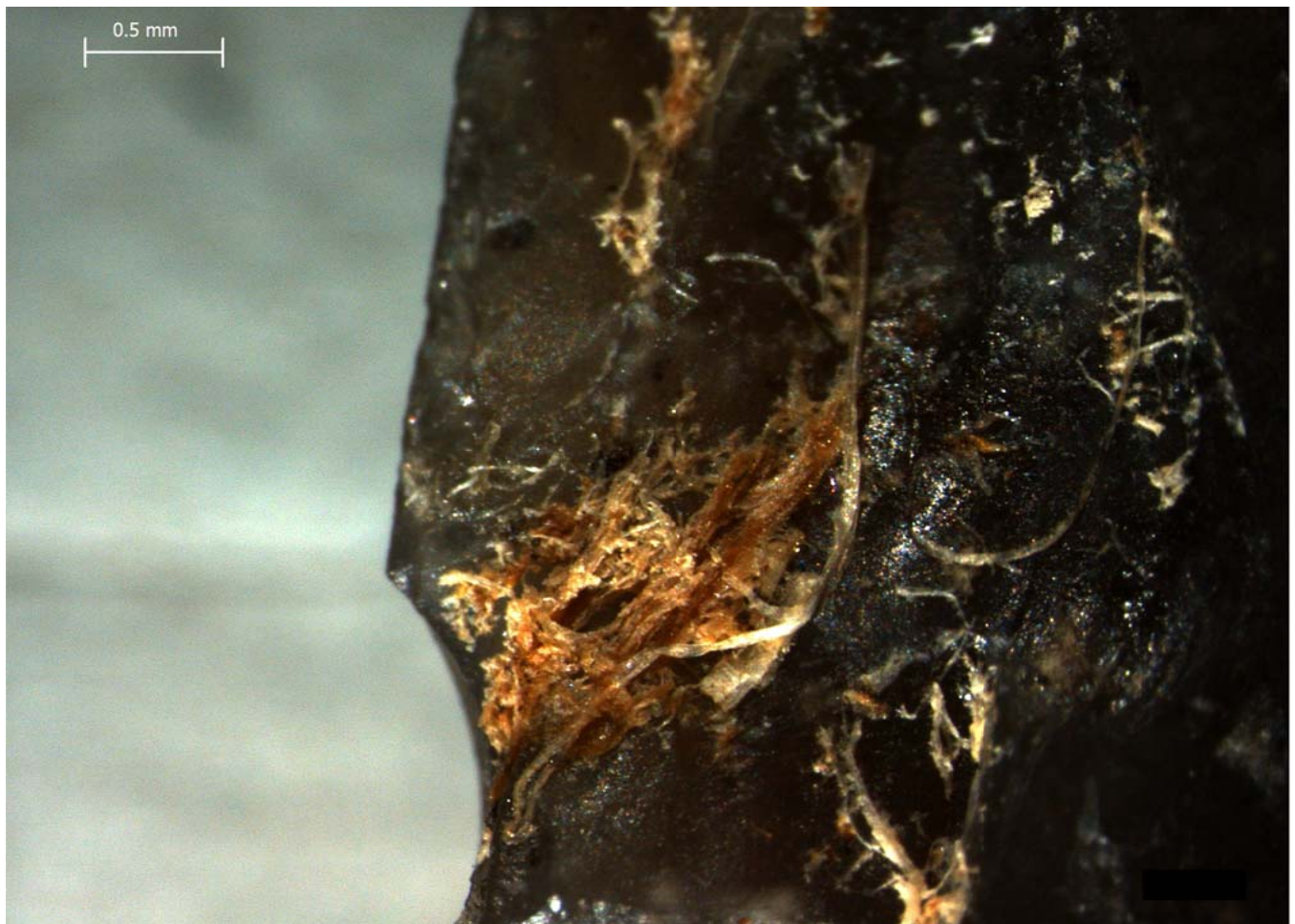


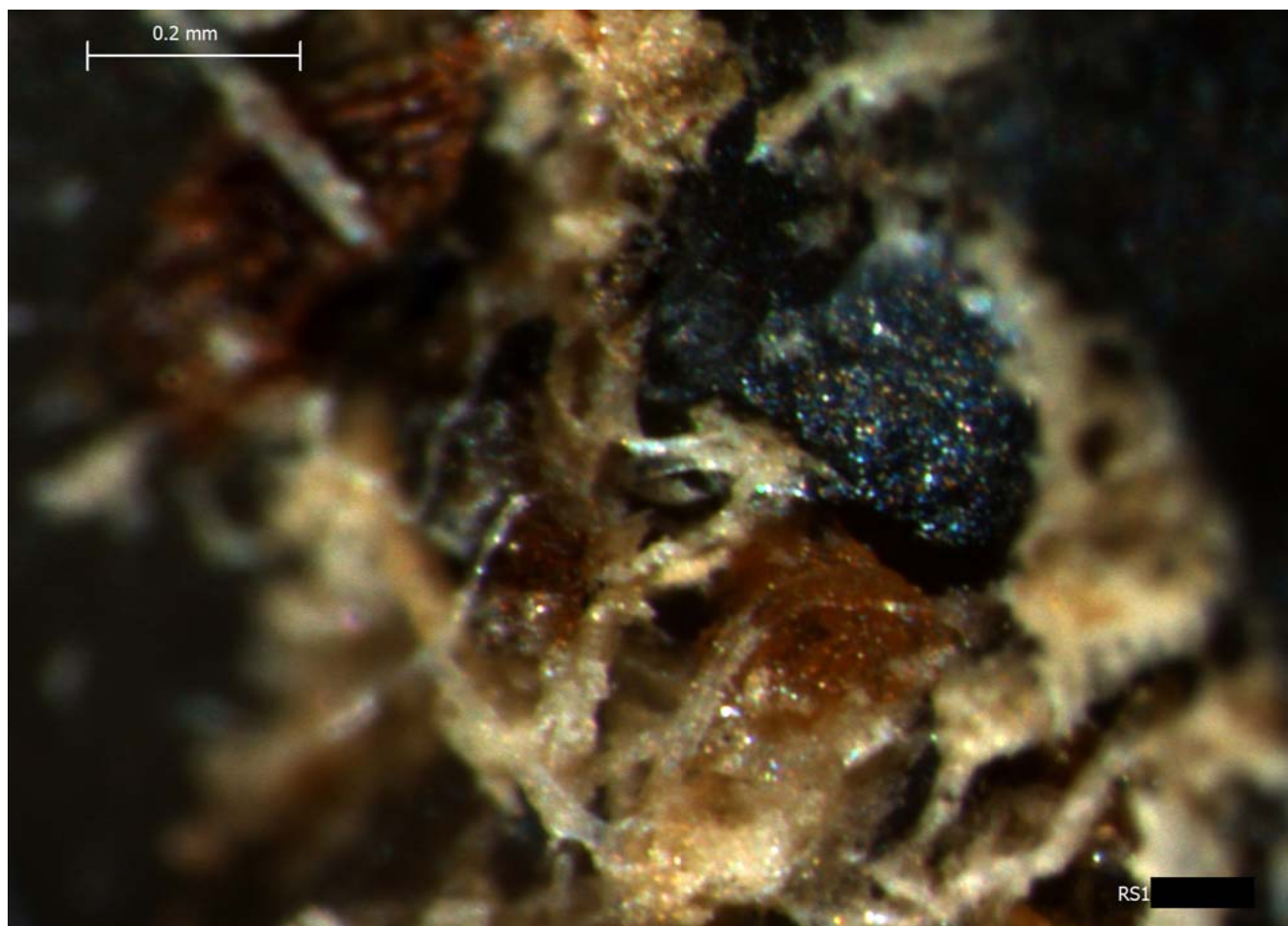


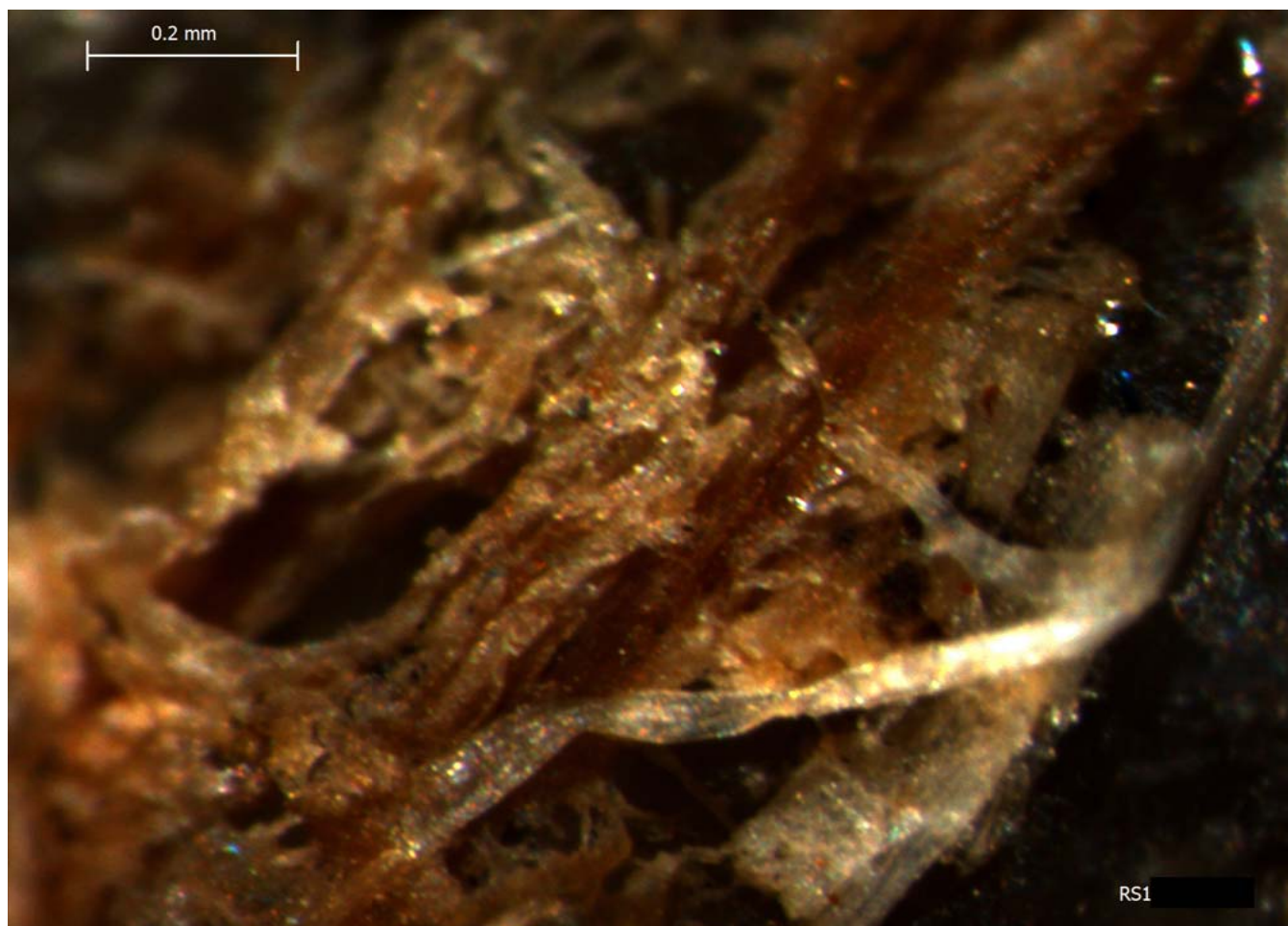


Blind Test 1

Residue 12Db

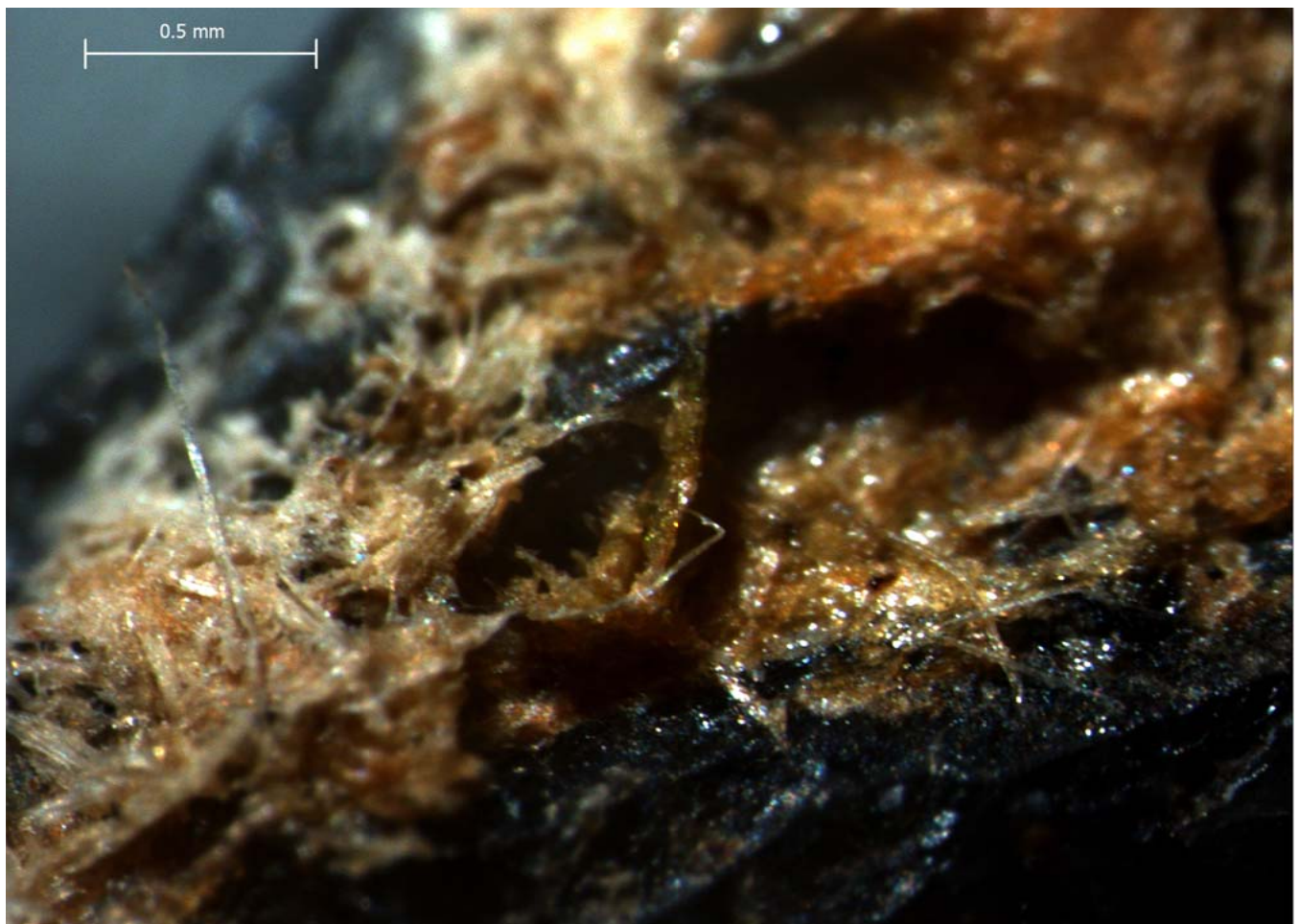
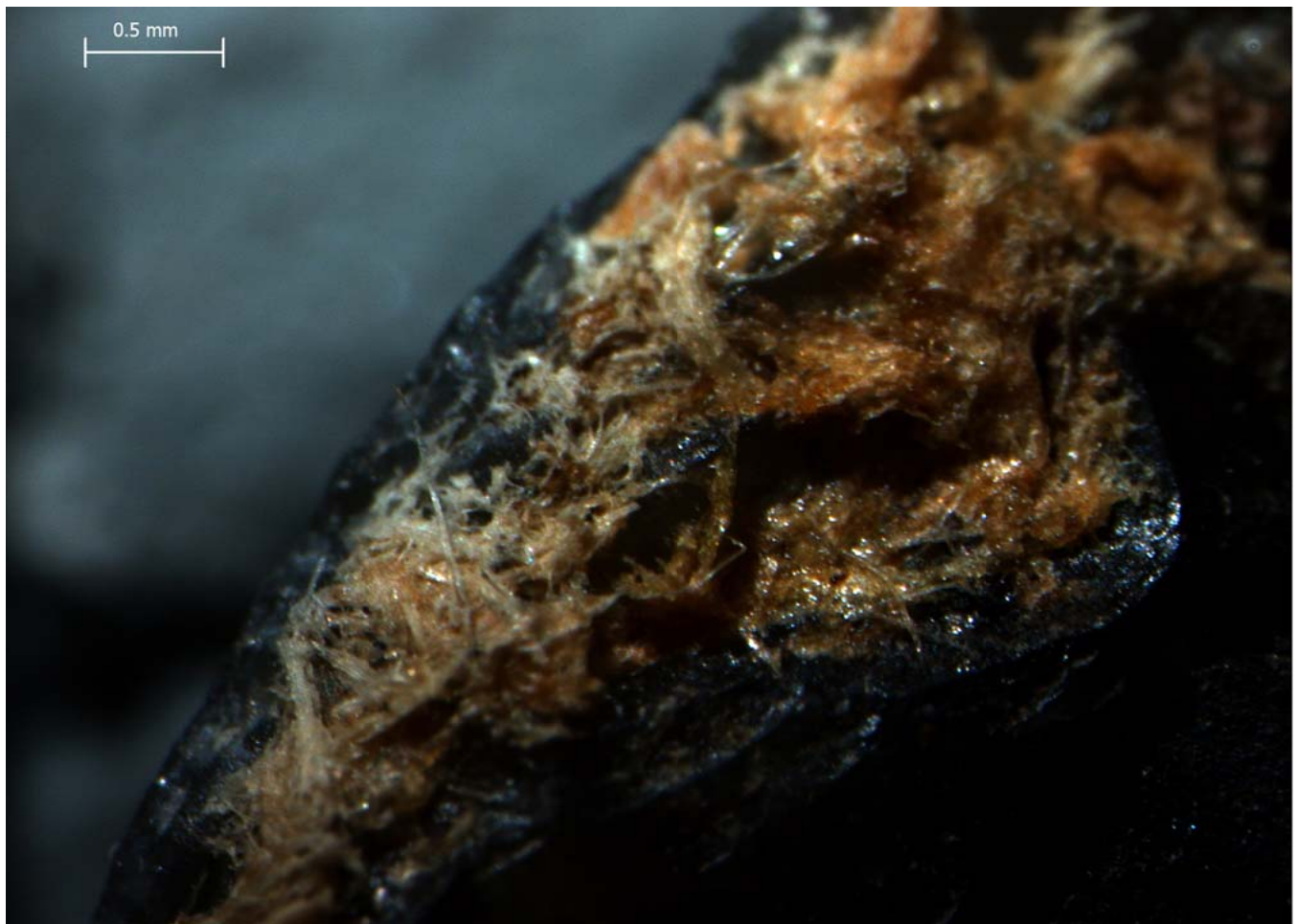


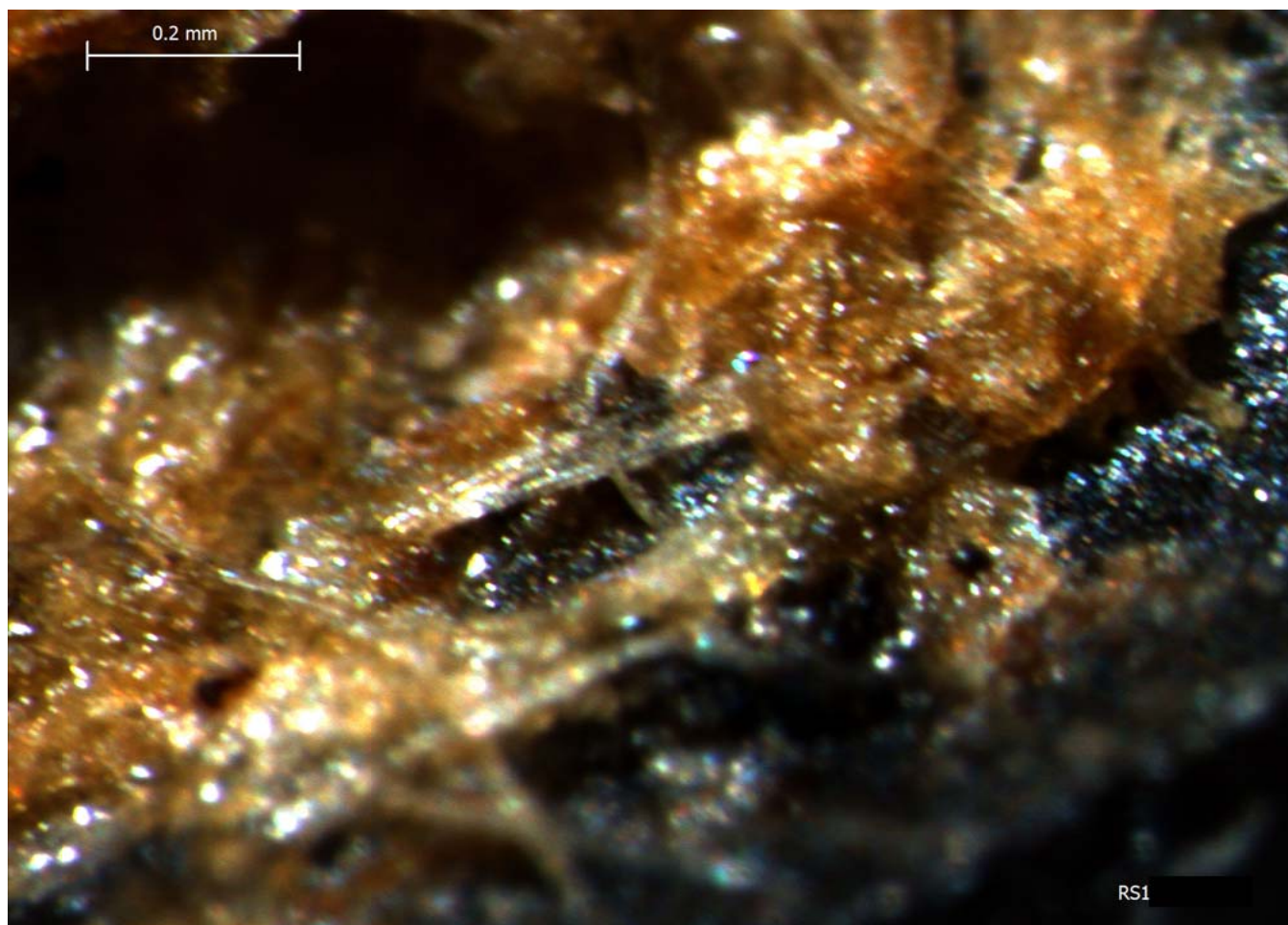
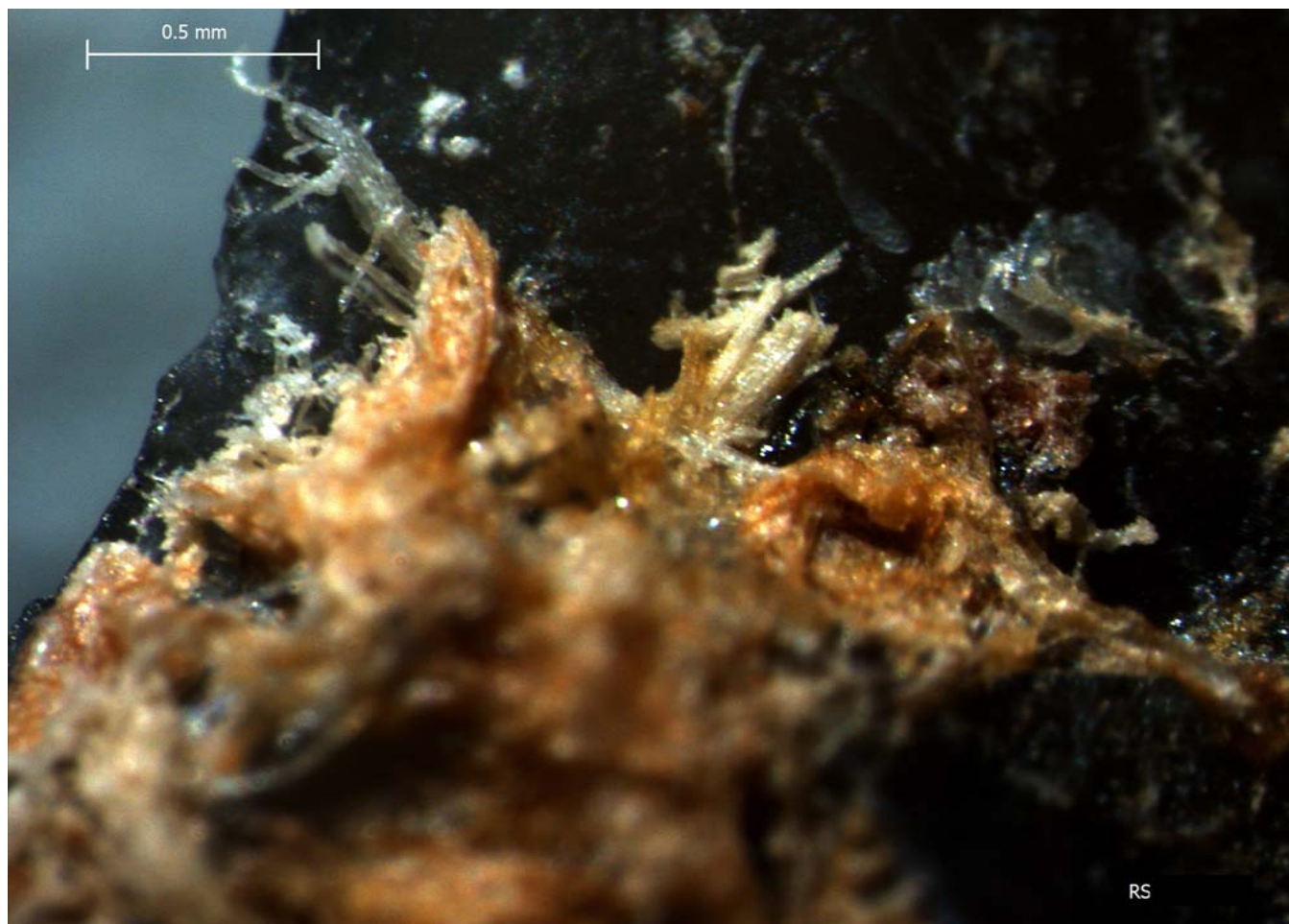


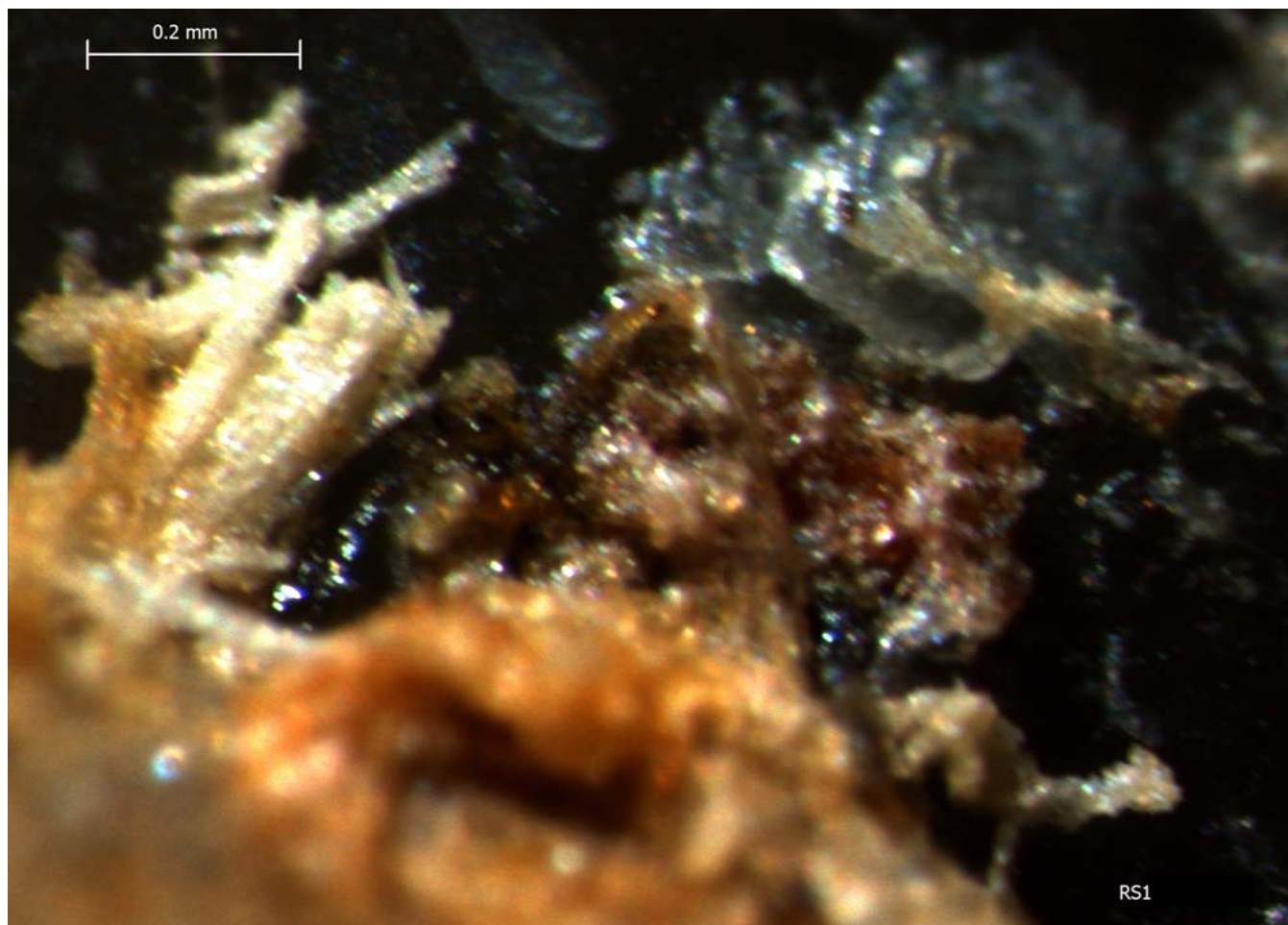


Blind Test 1

Residue 12Dc

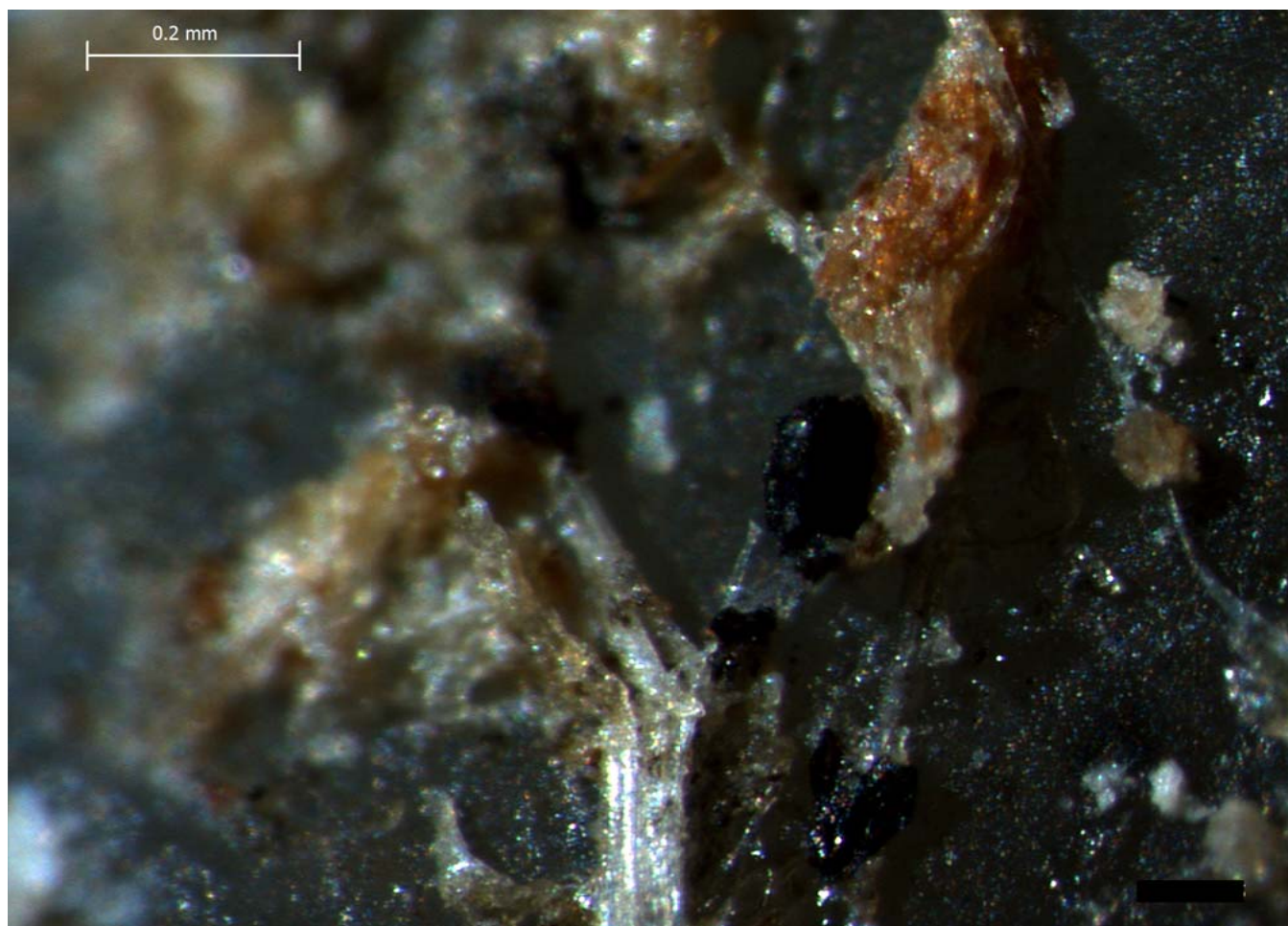
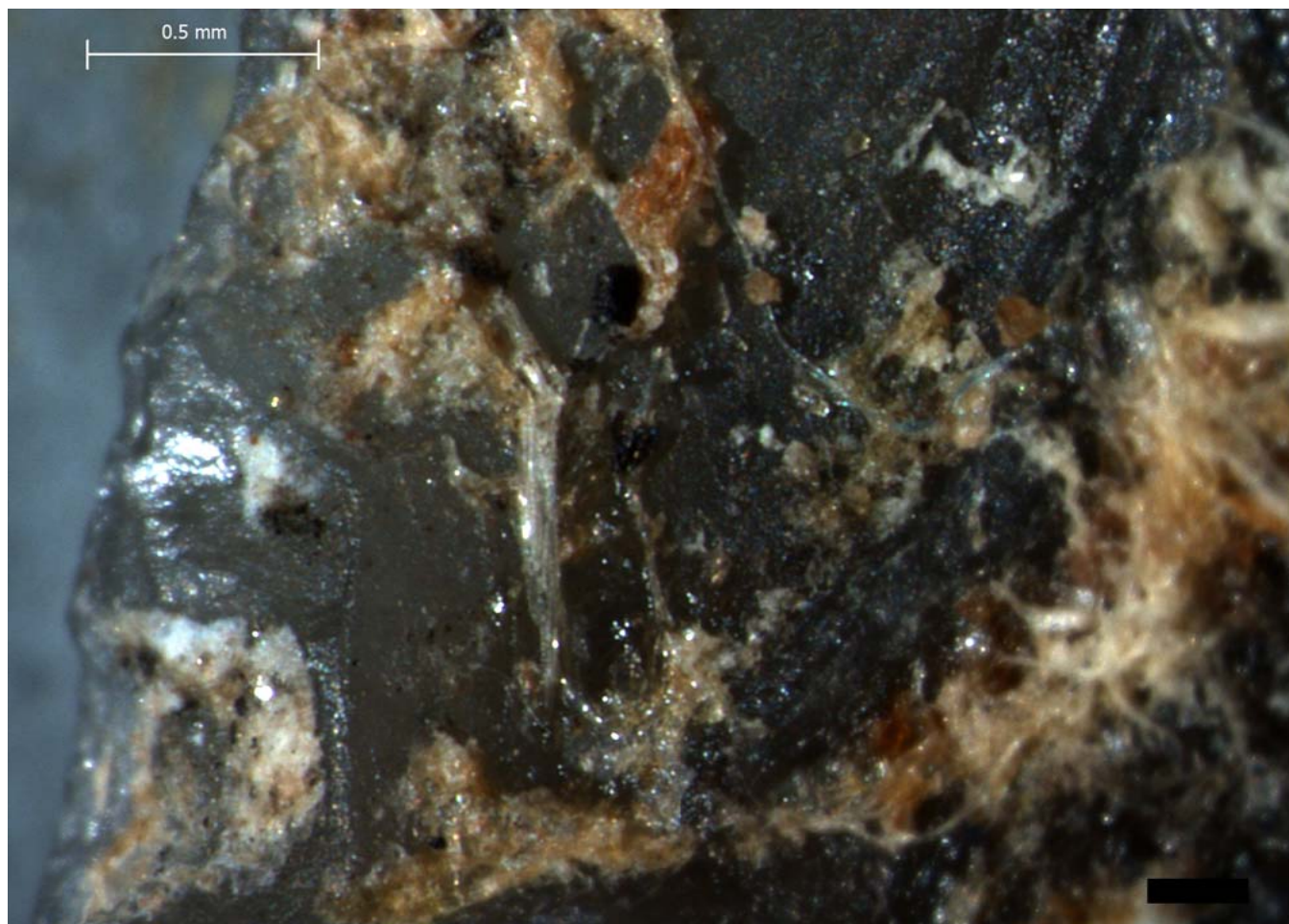


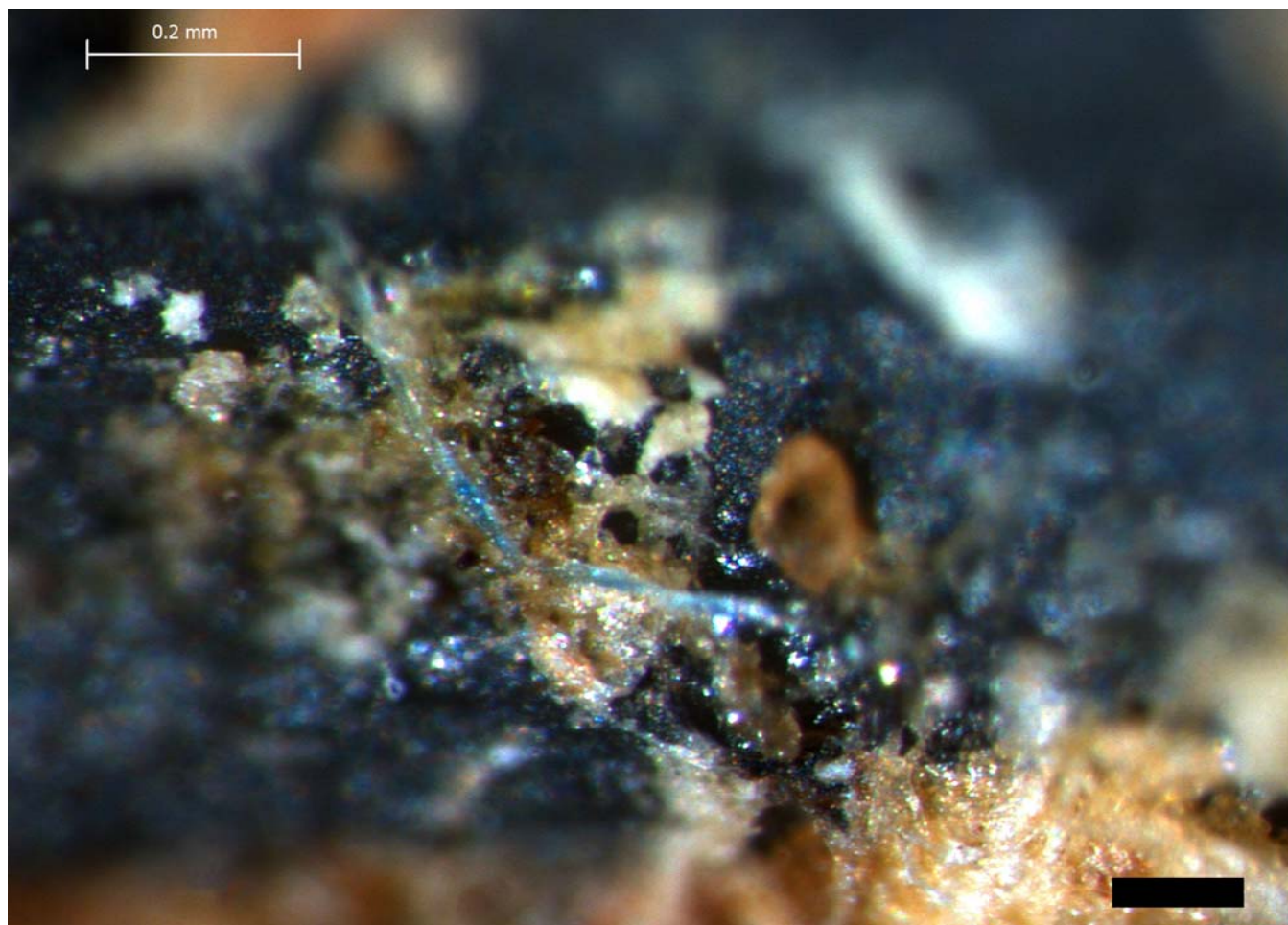




Blind Test 1

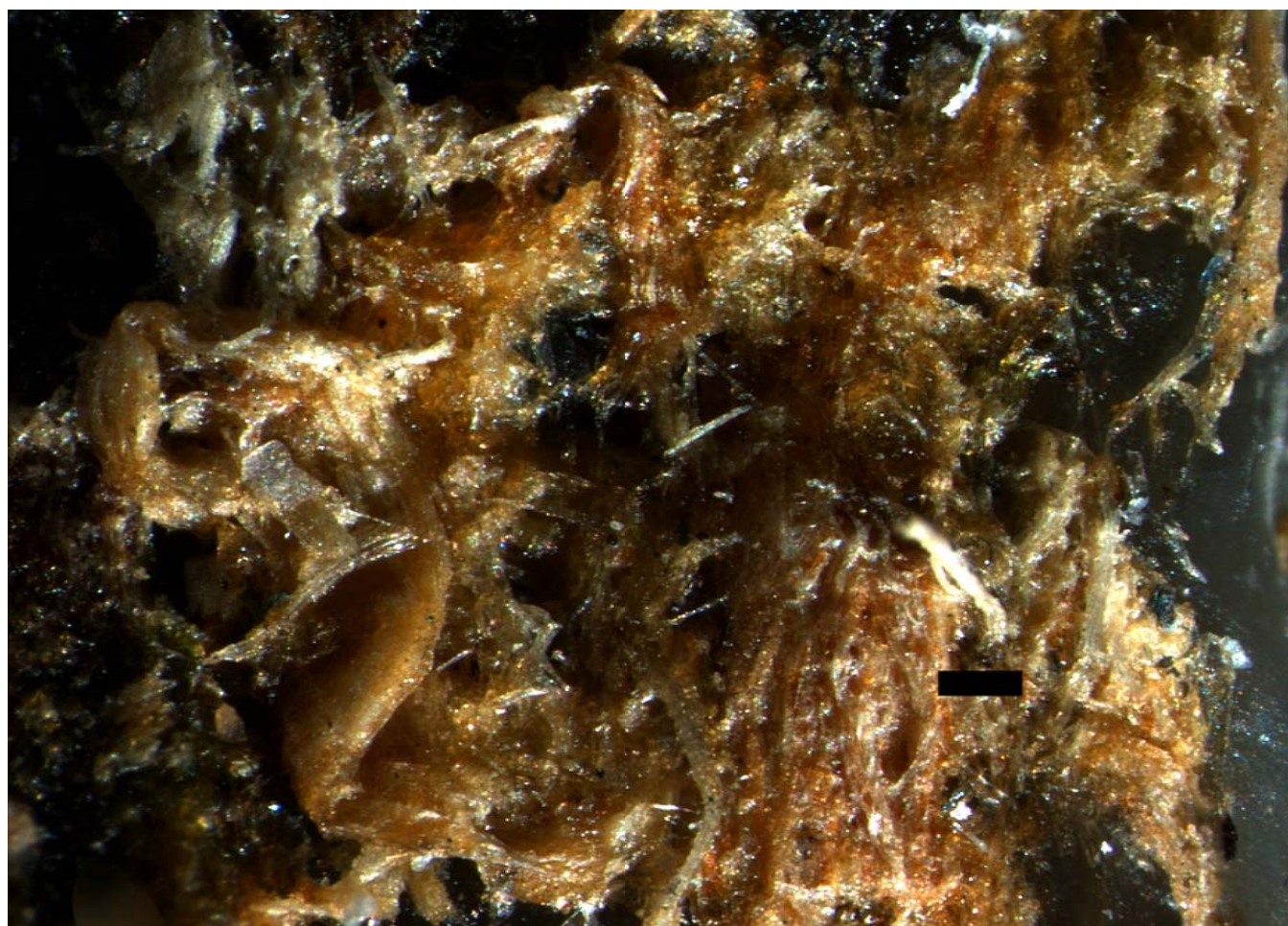
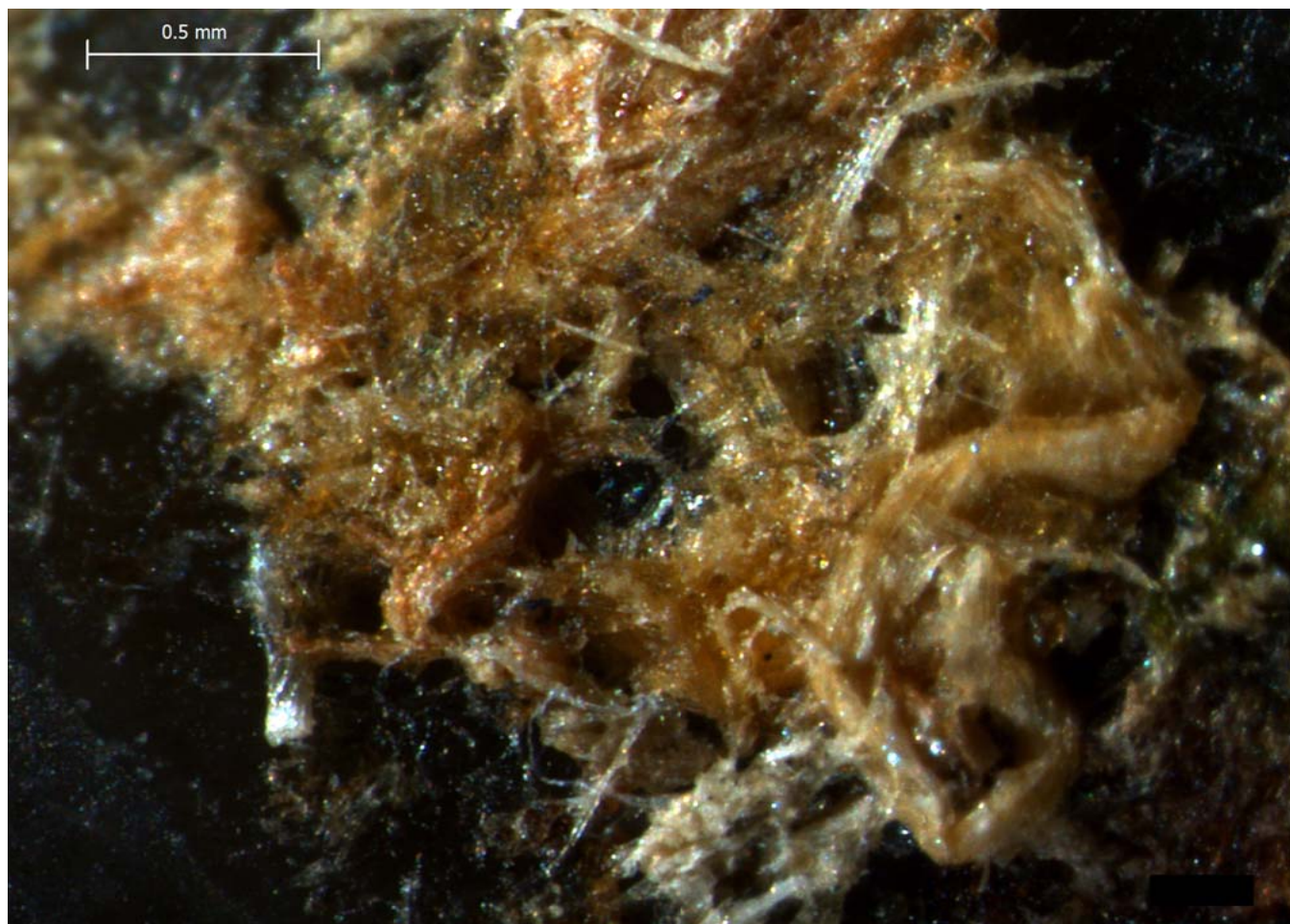
Residue 12Dd

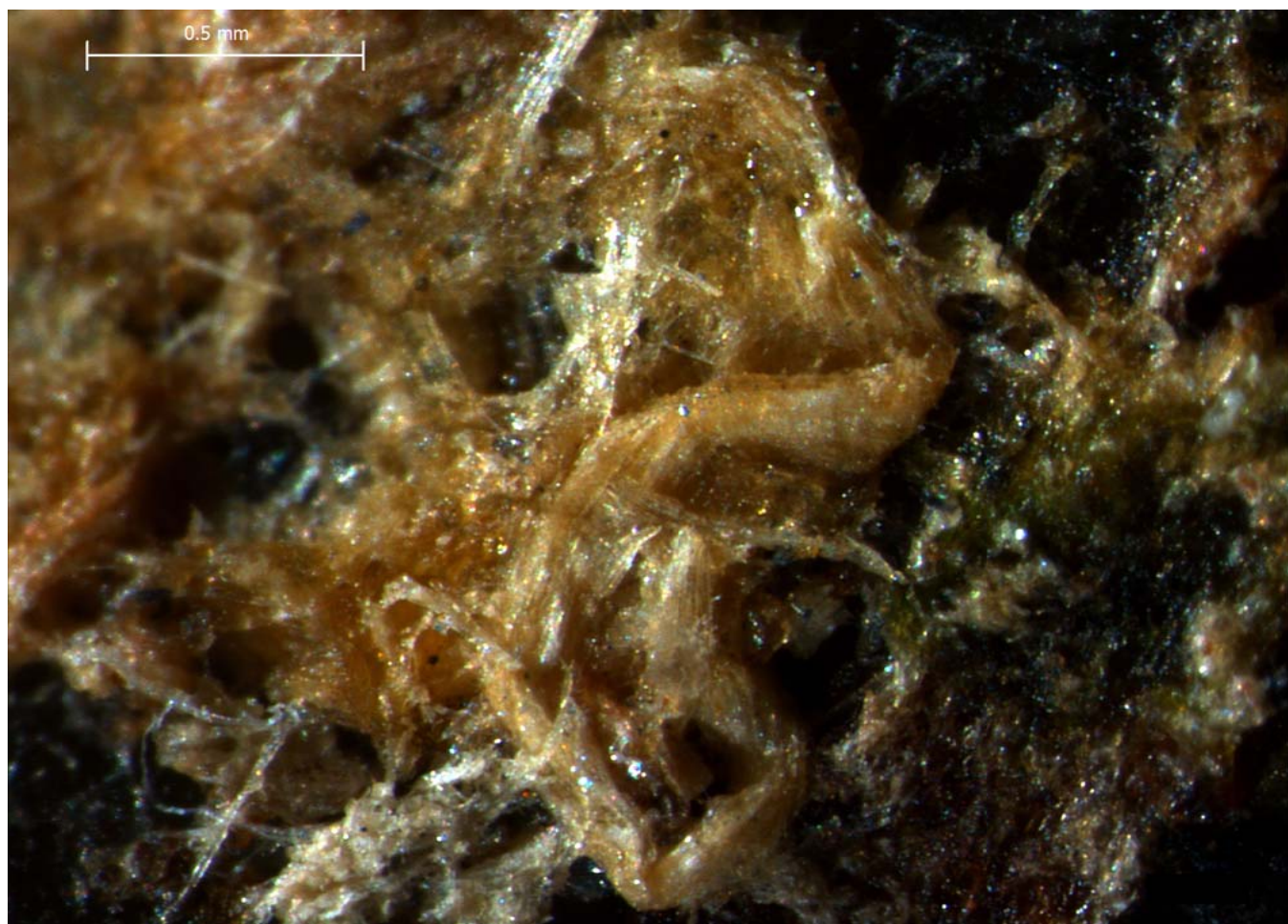
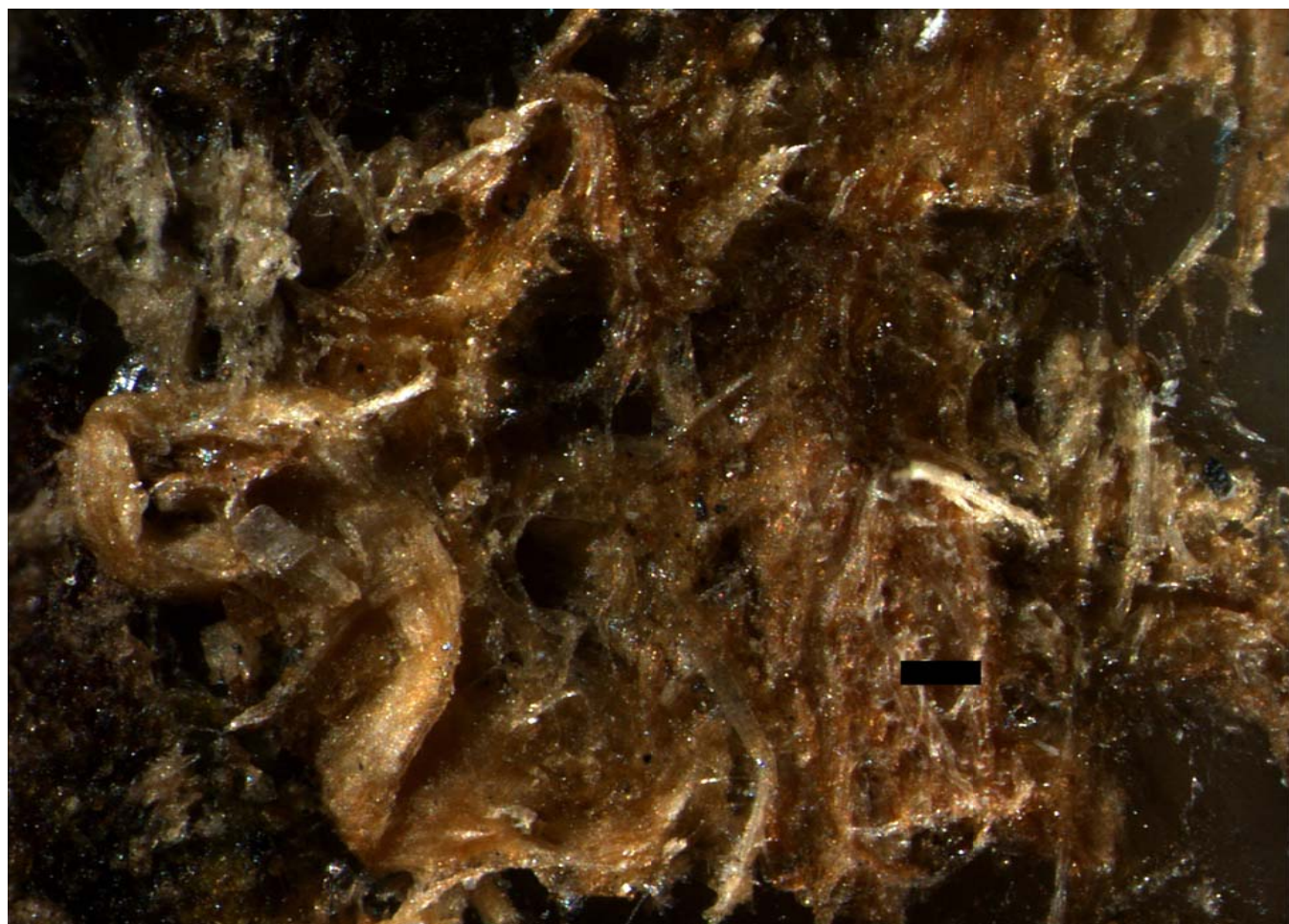


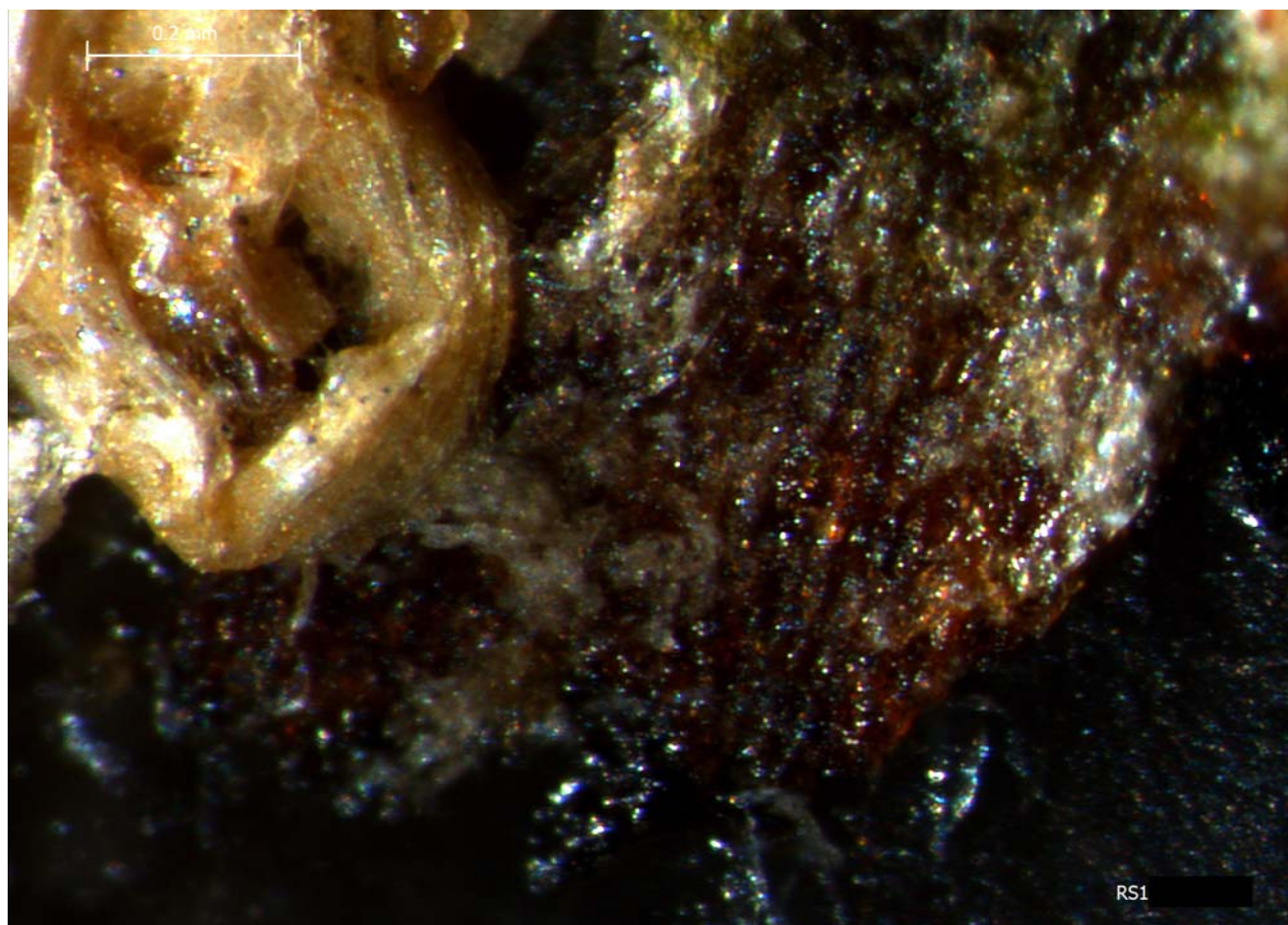
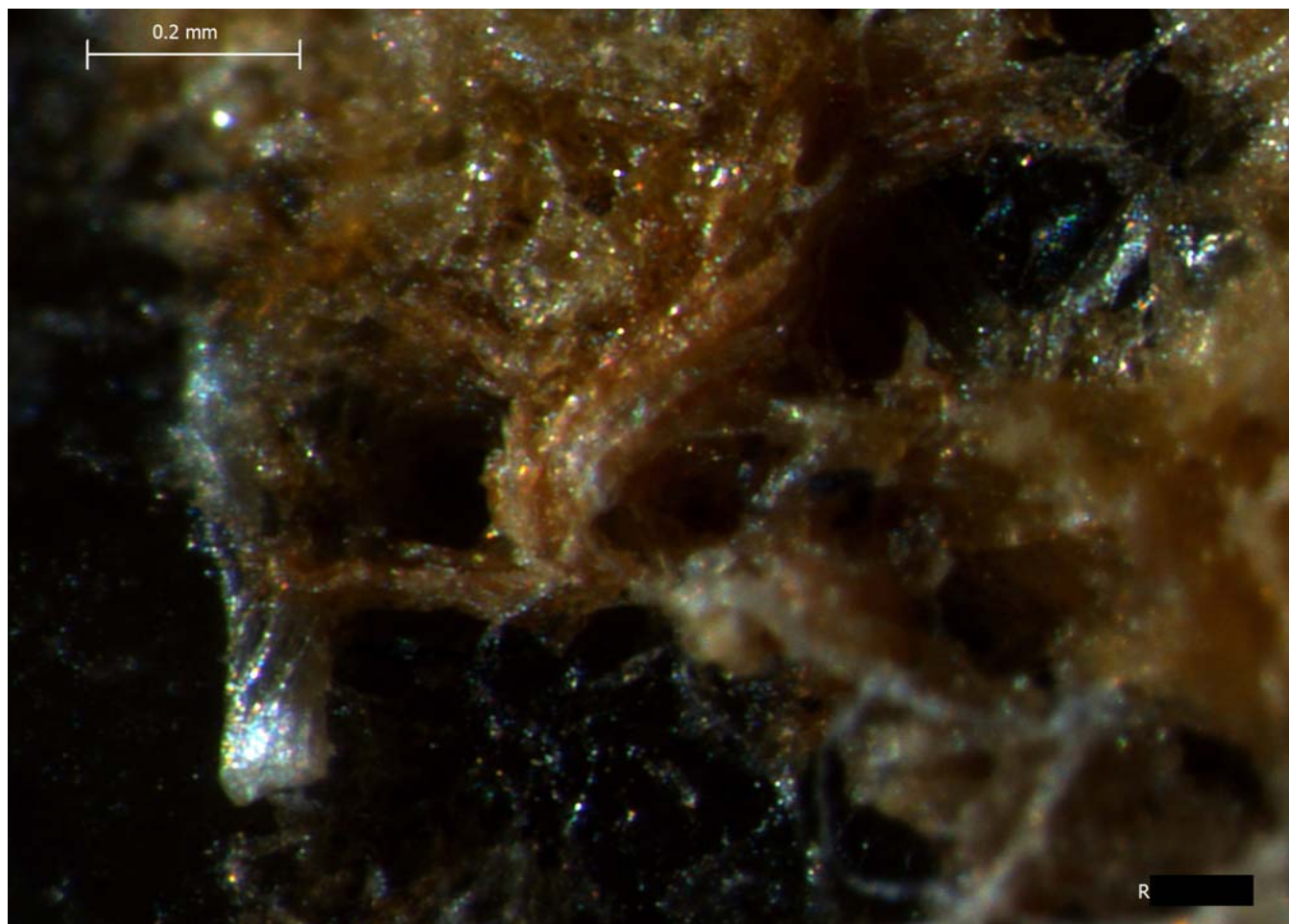


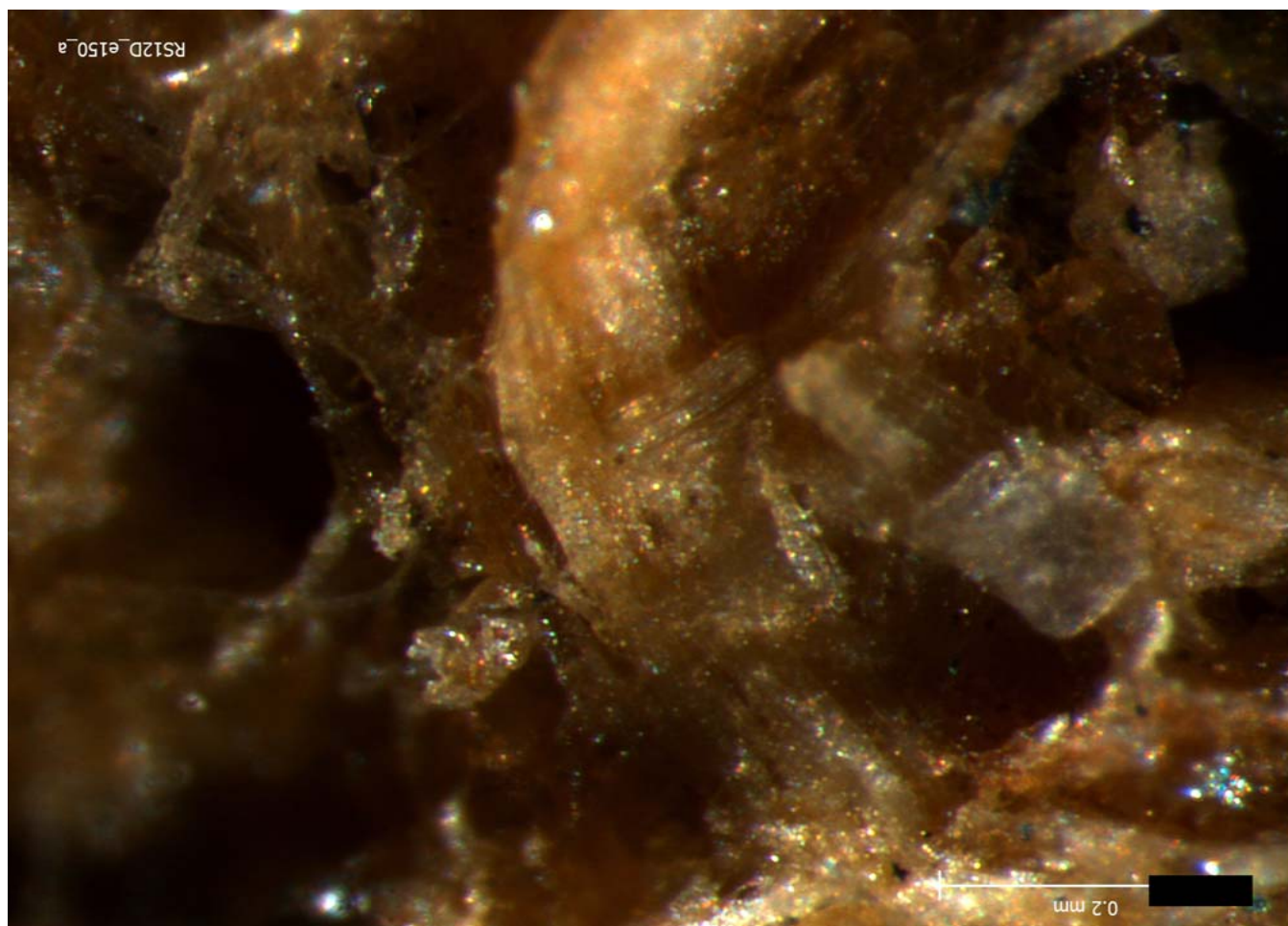
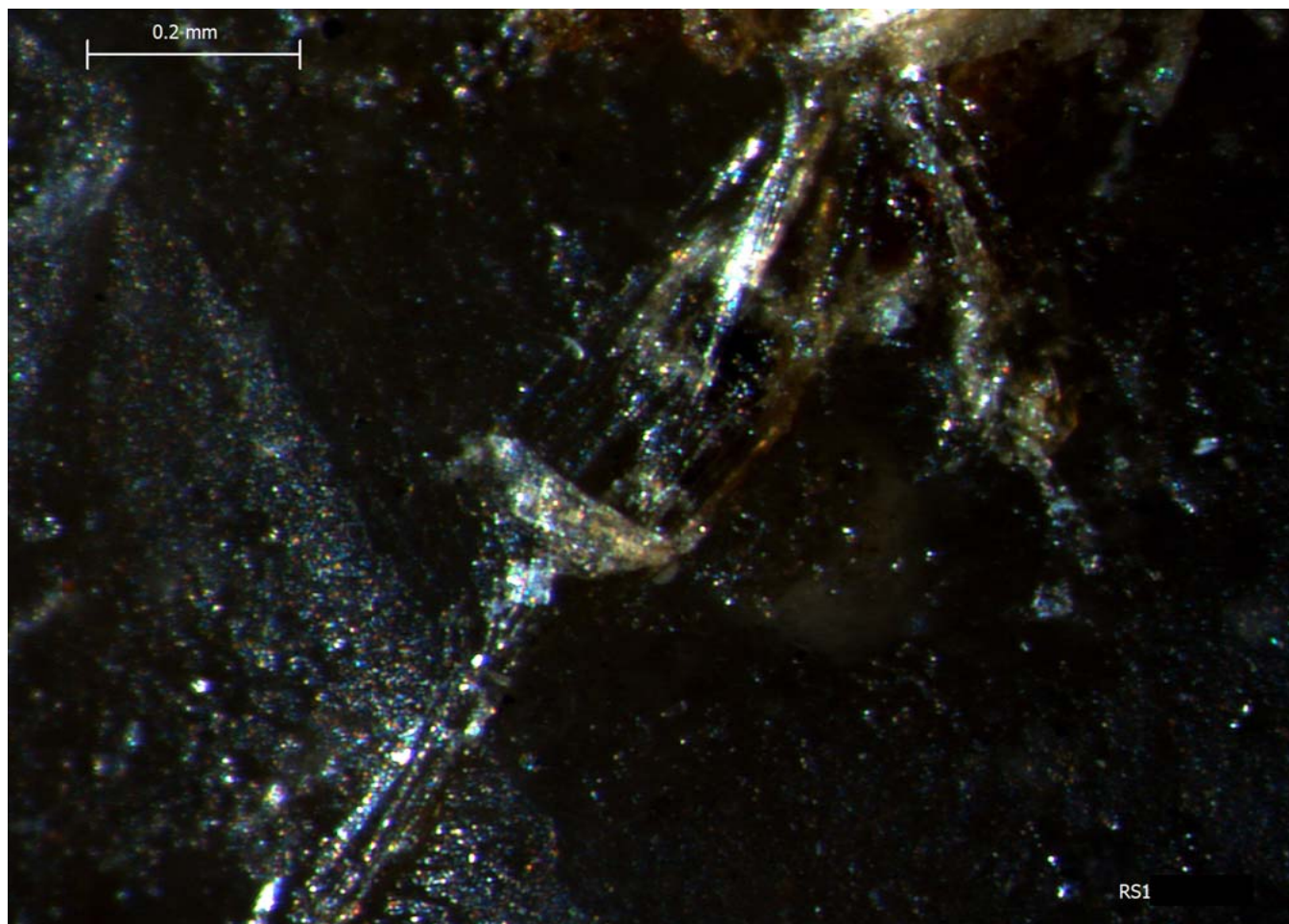
Blind Test 1

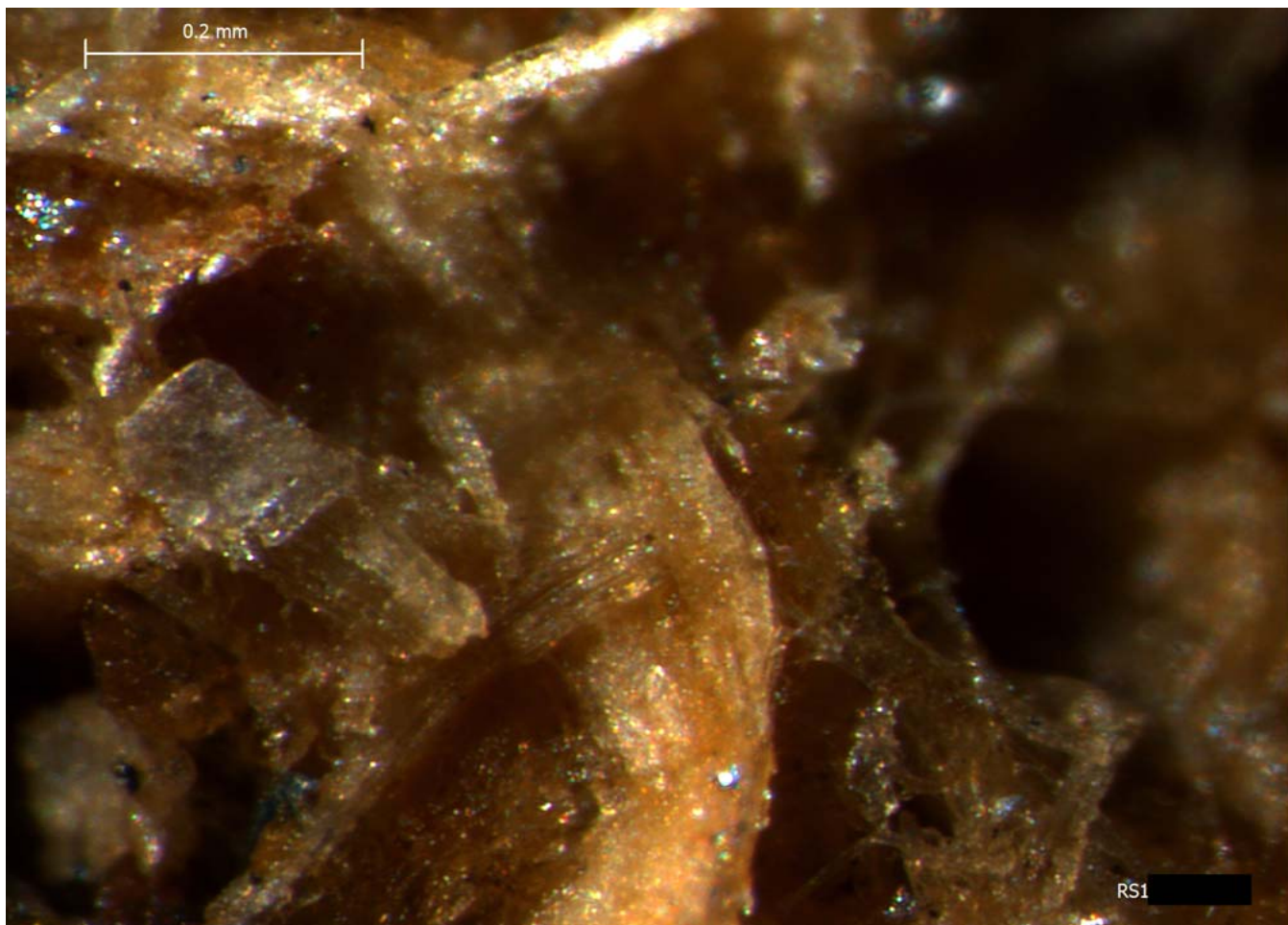
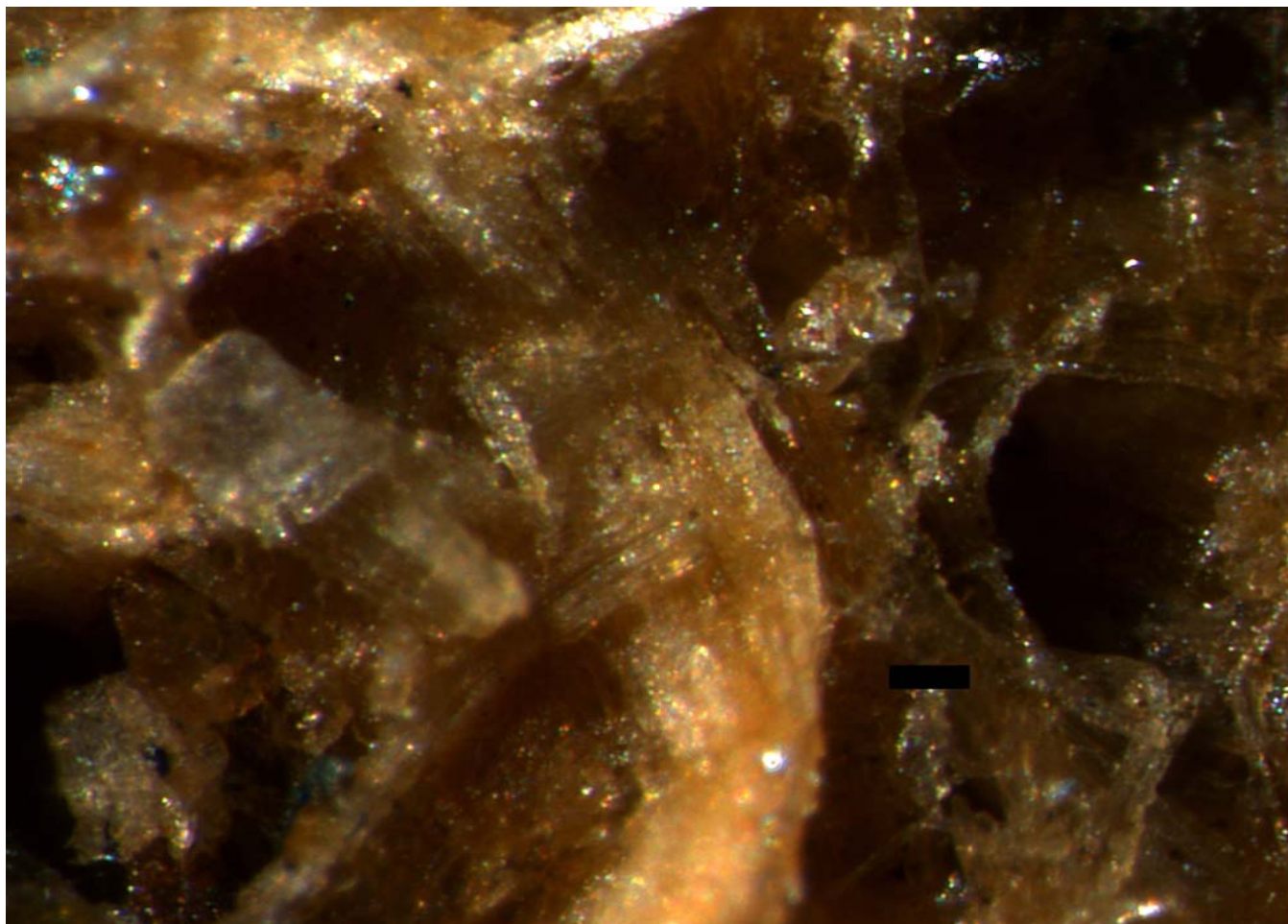
Residue 12De

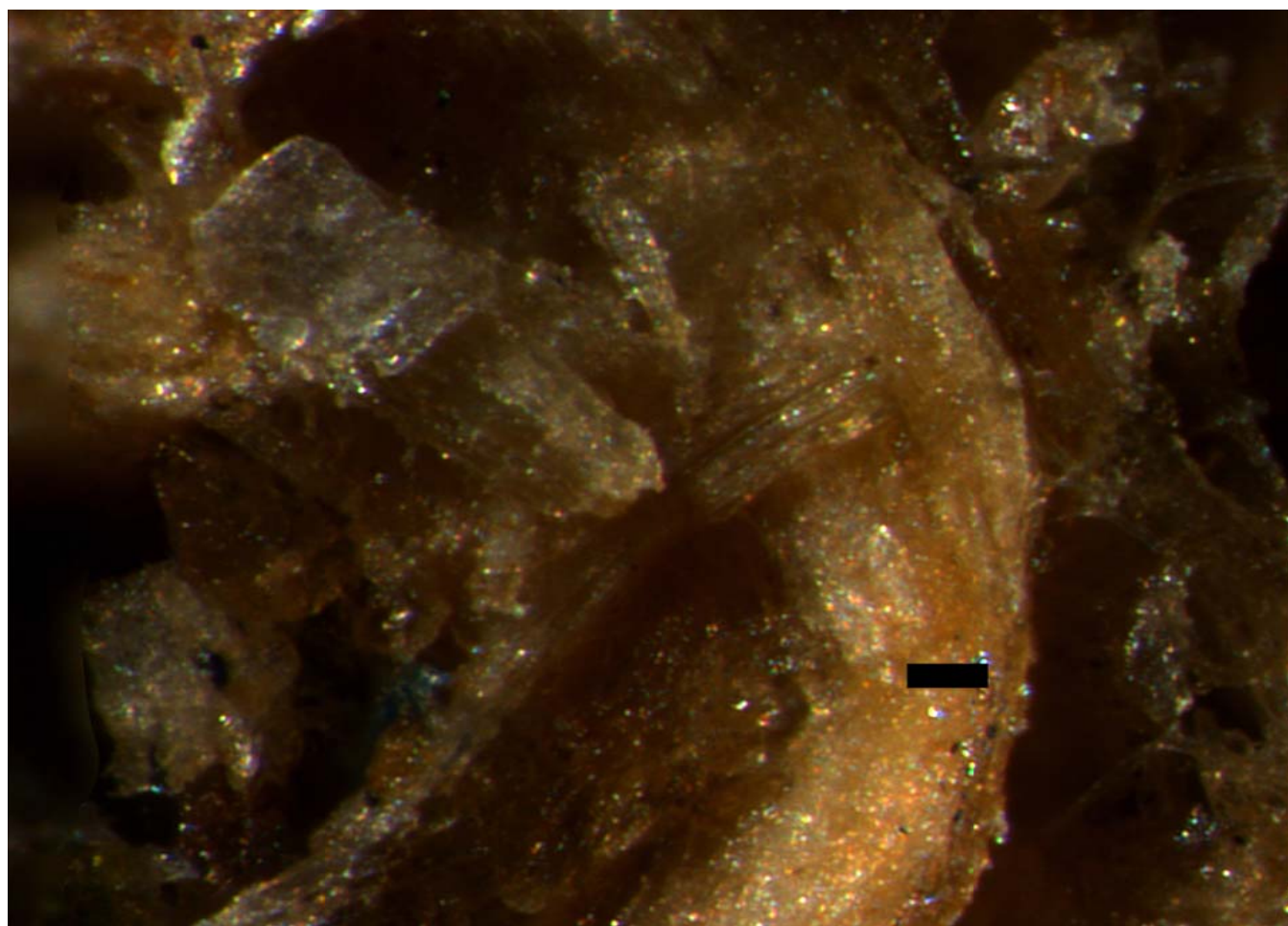
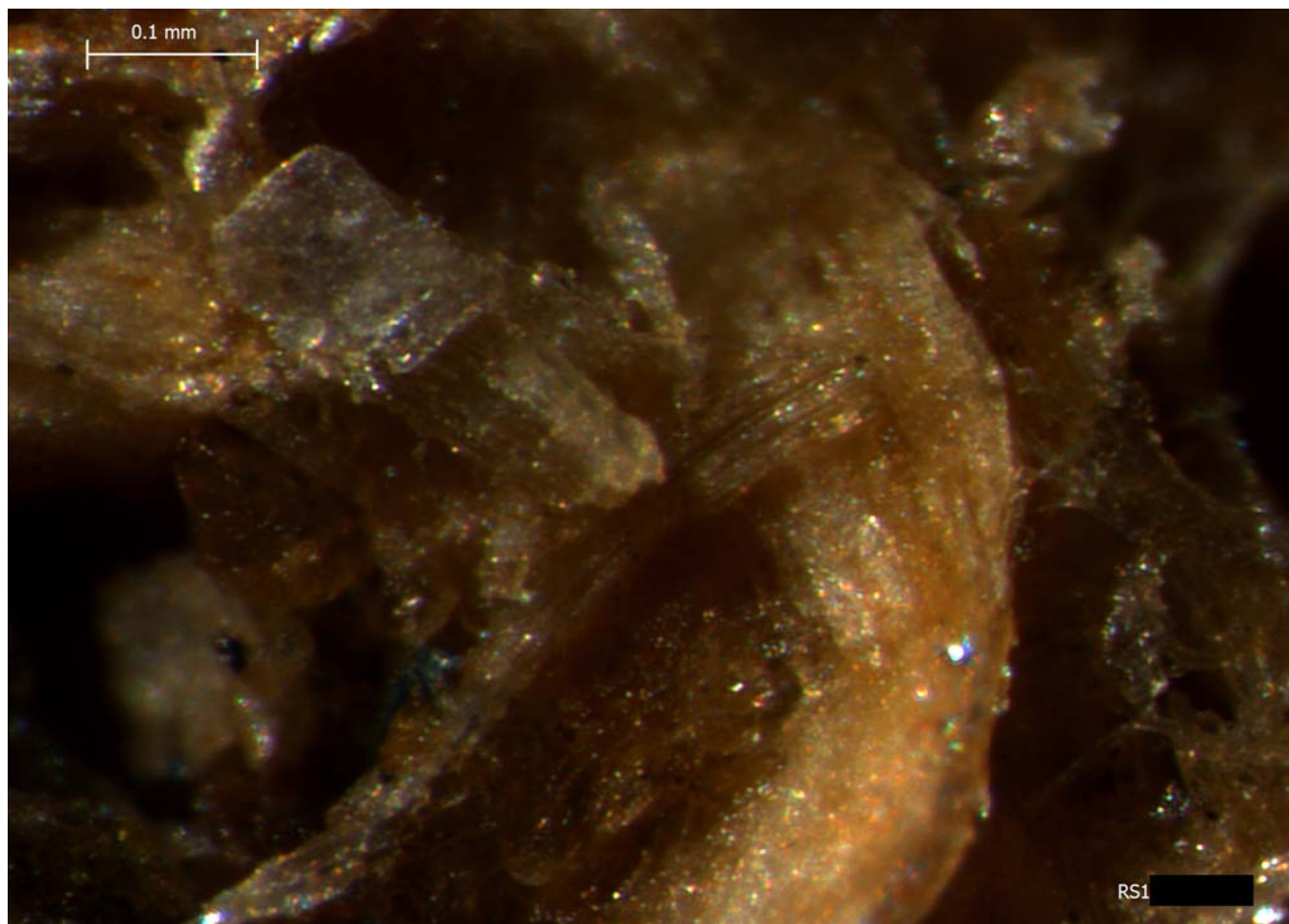


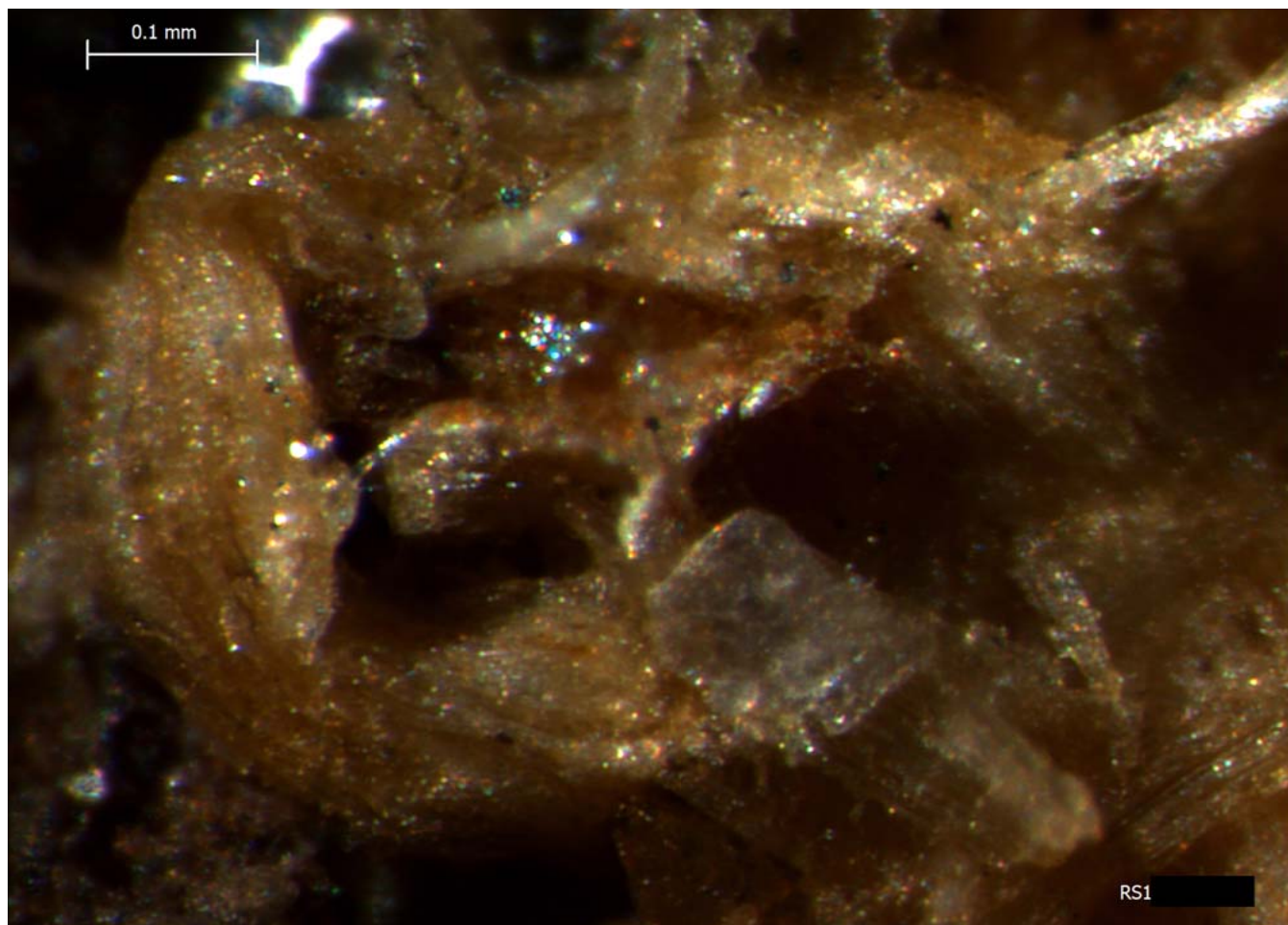






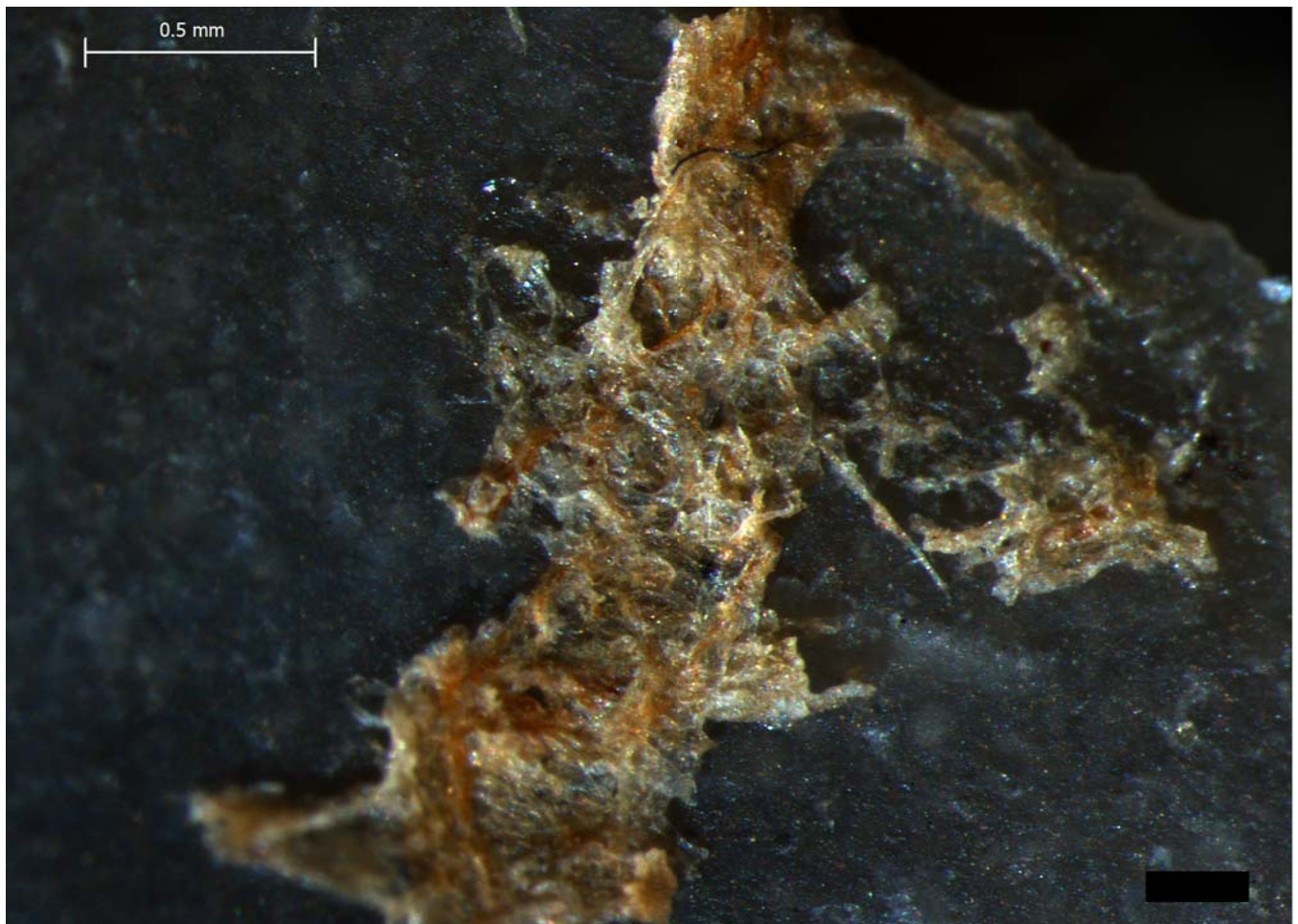


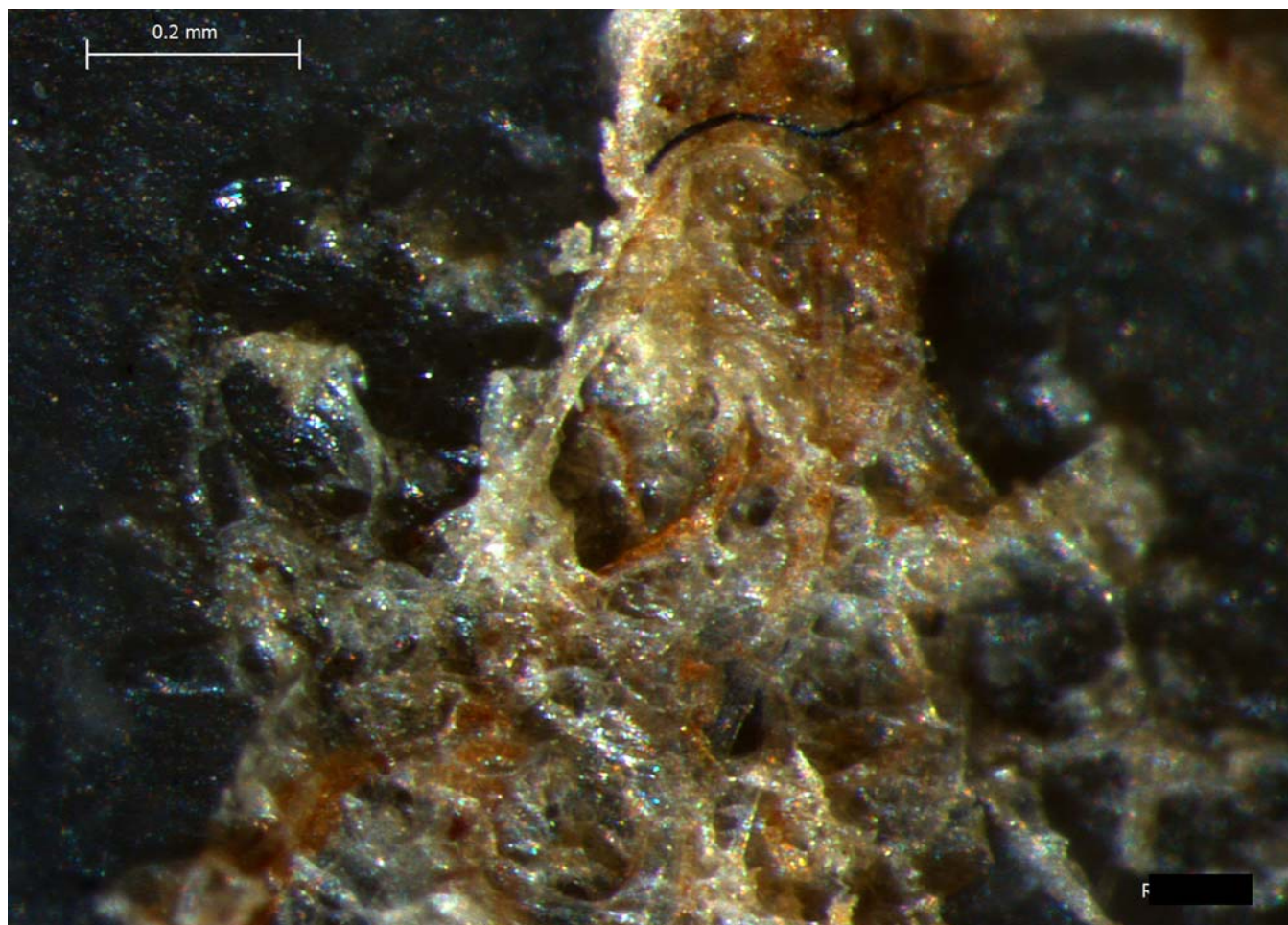




Blind Test 1

Residue 12Df





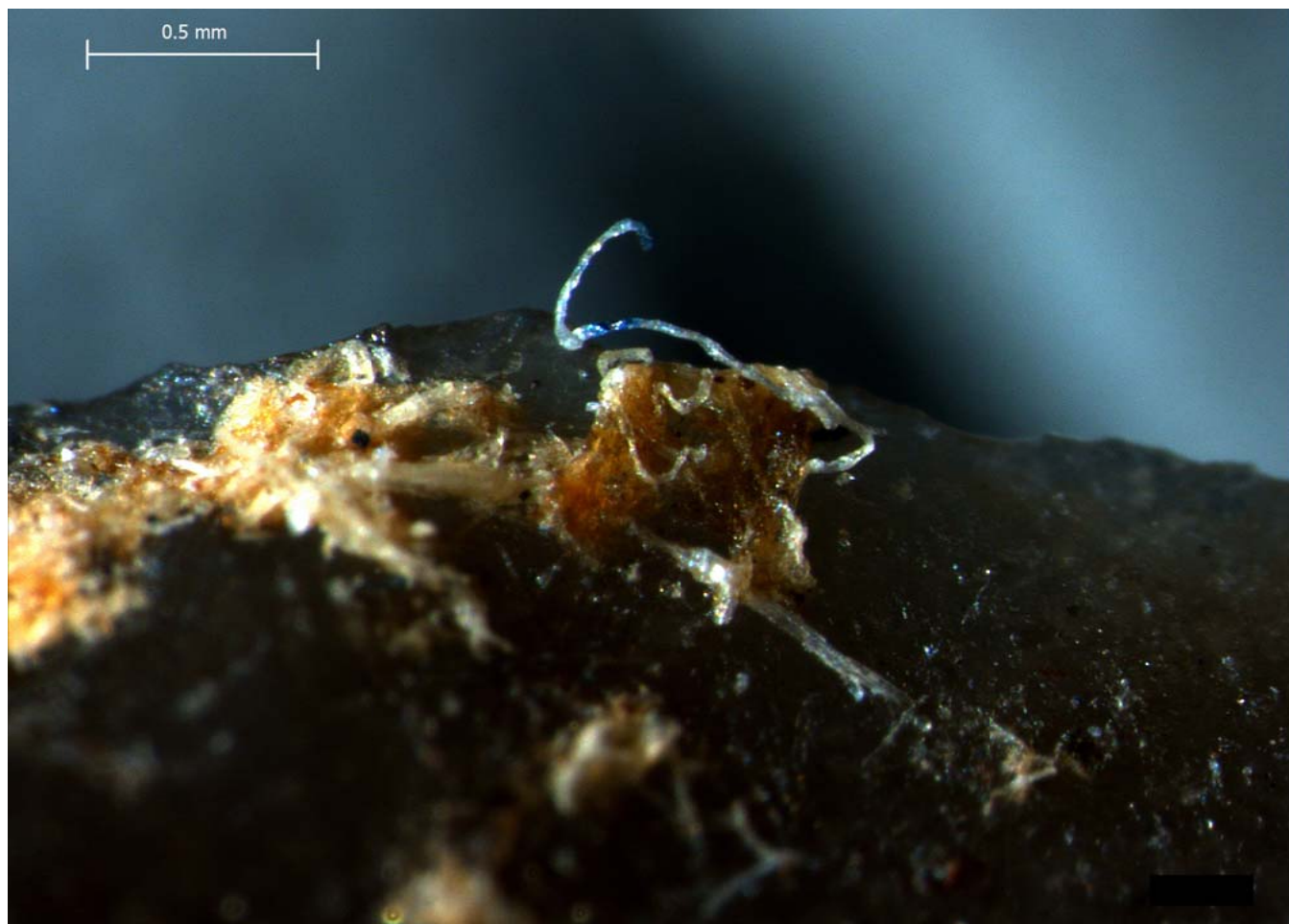
Blind Test 1

Residue 12Dg



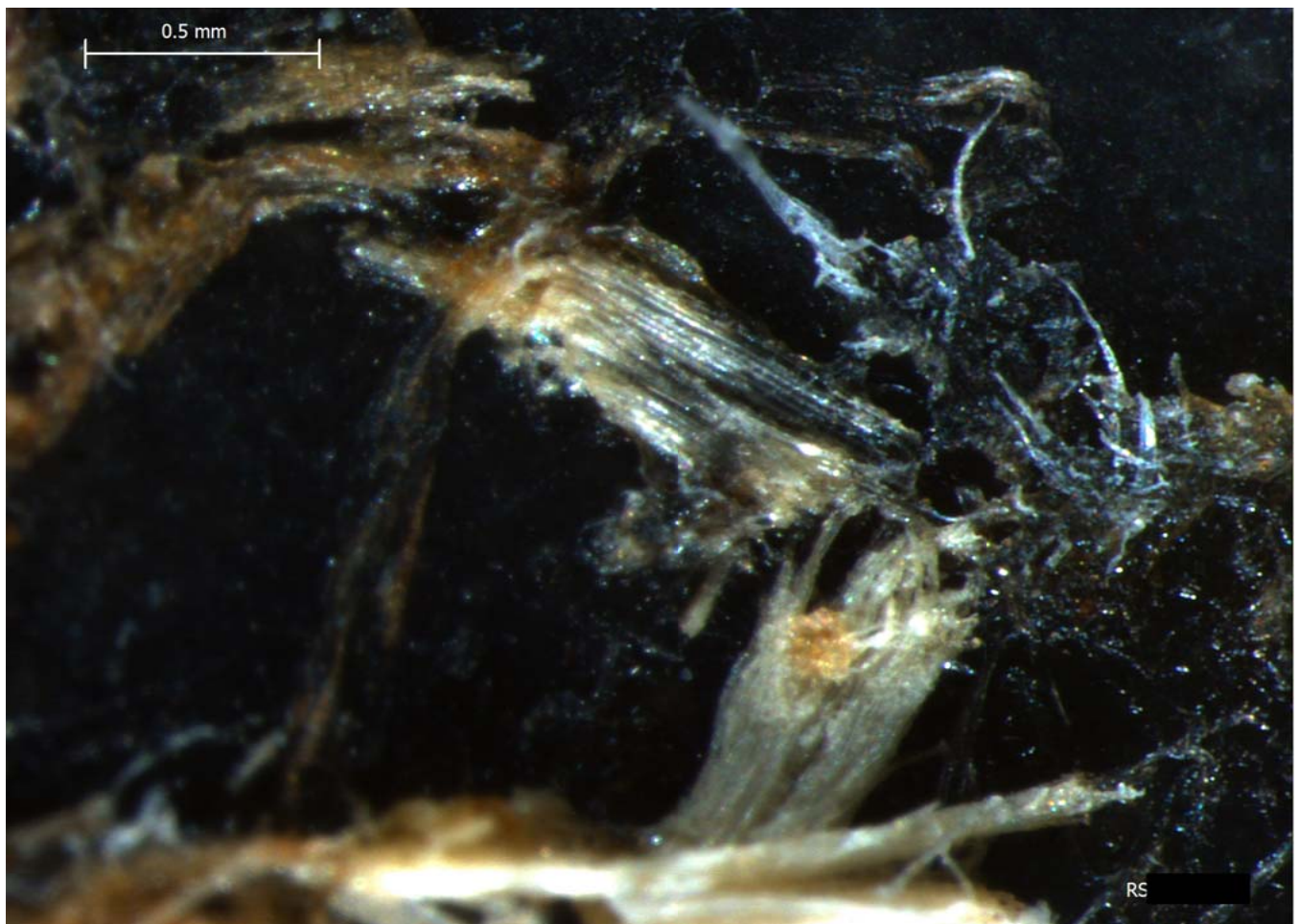
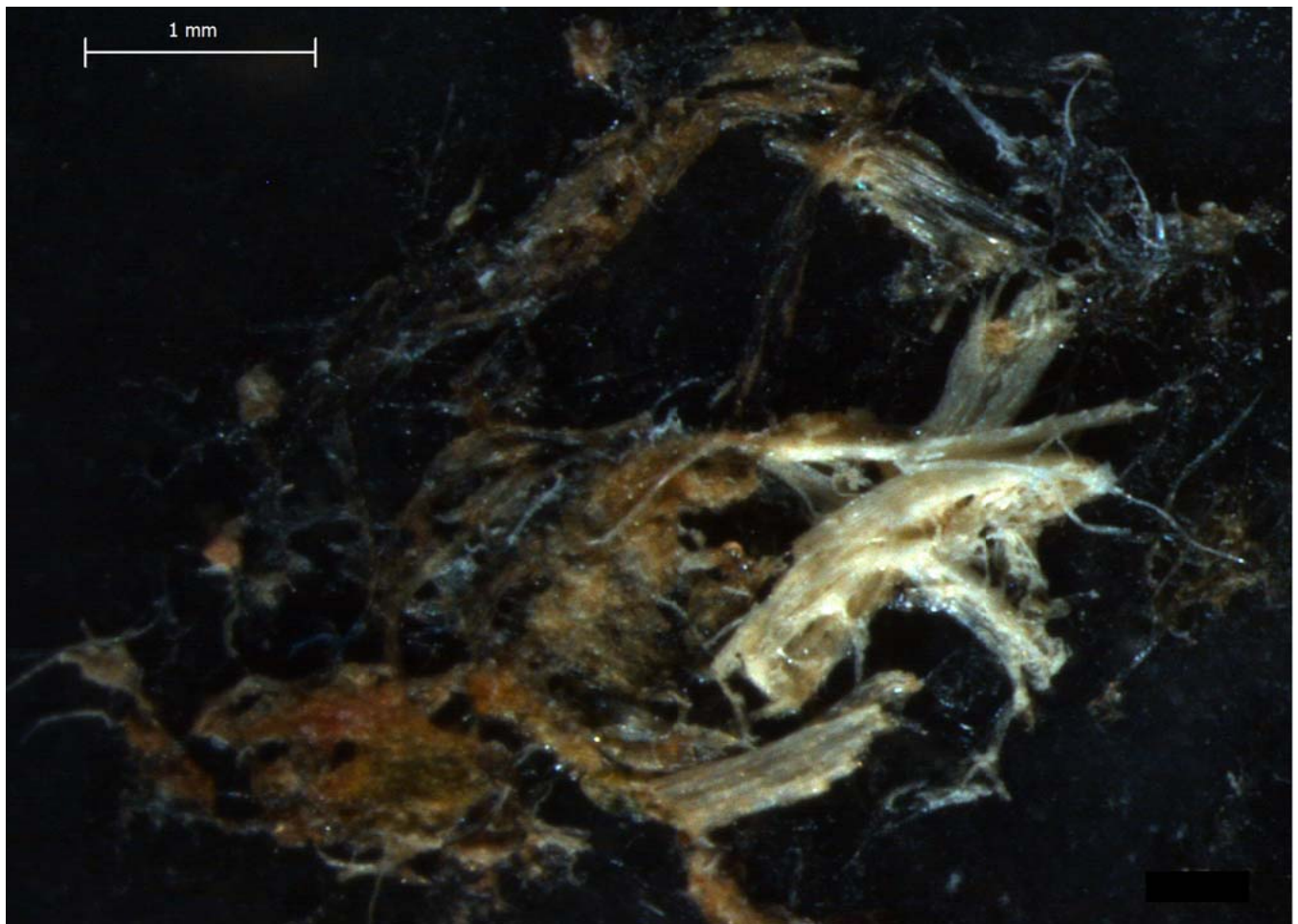
Blind Test 1

Residue 12Dh

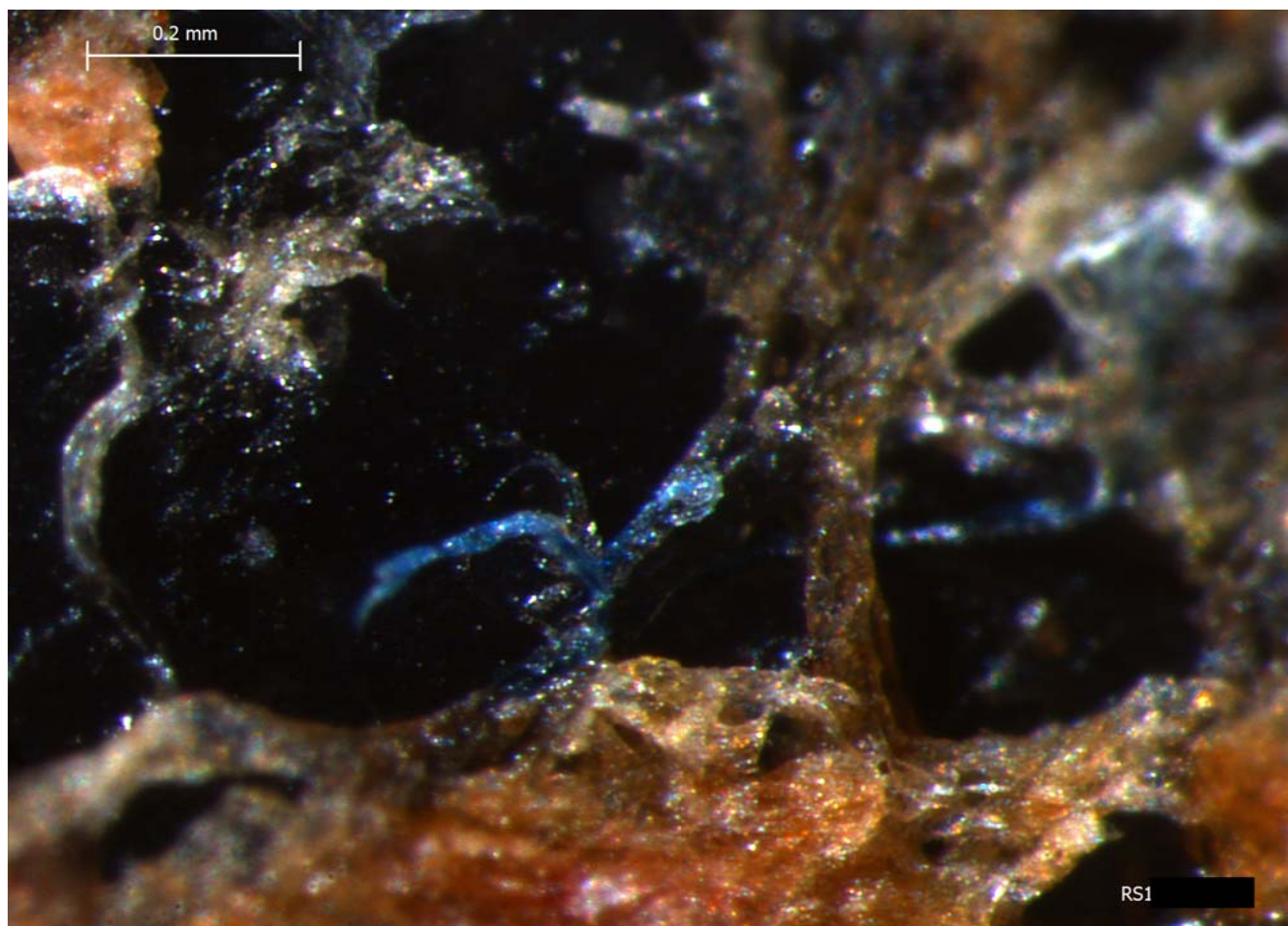


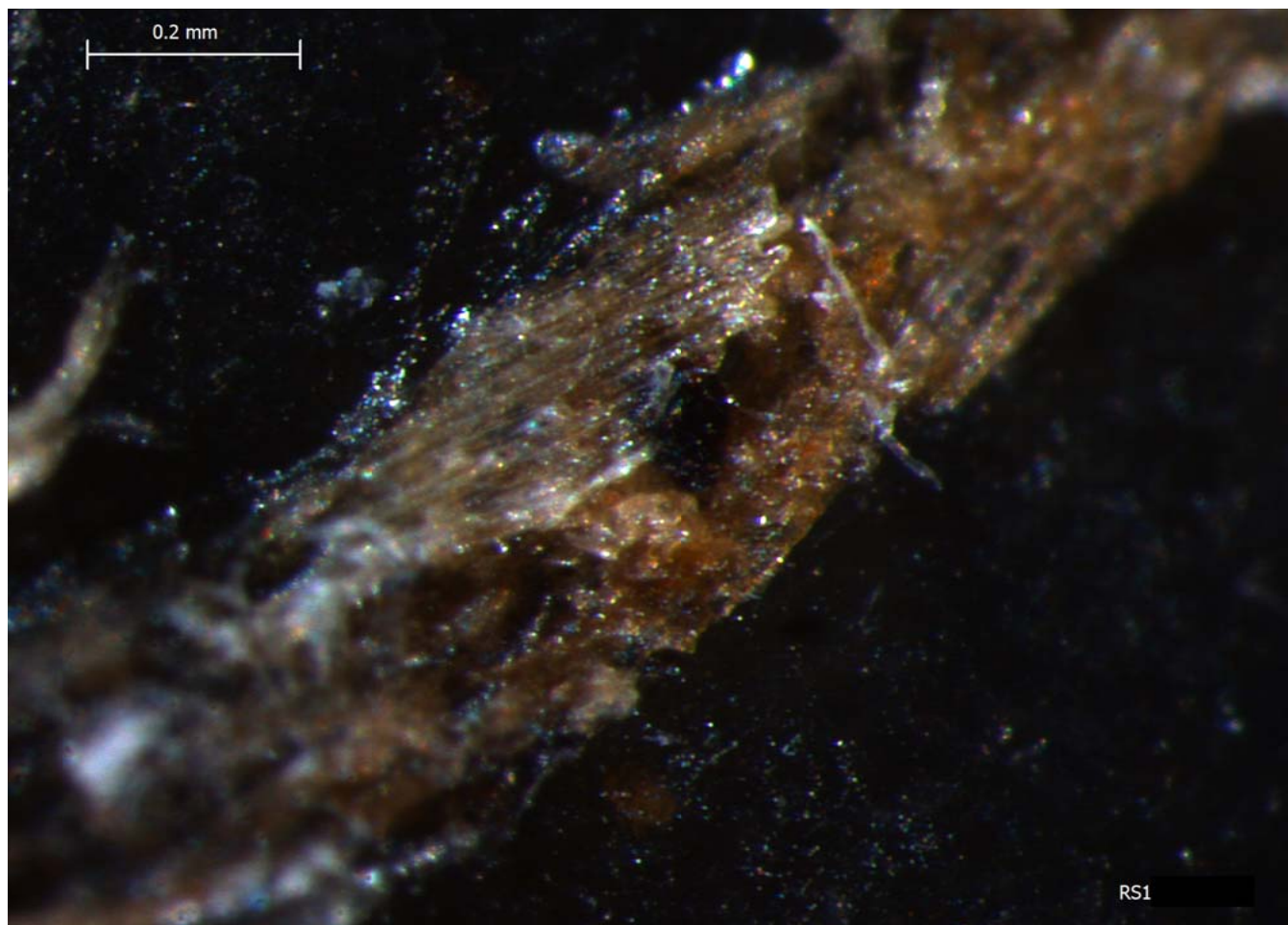
Blind Test 1

Residue 12Va



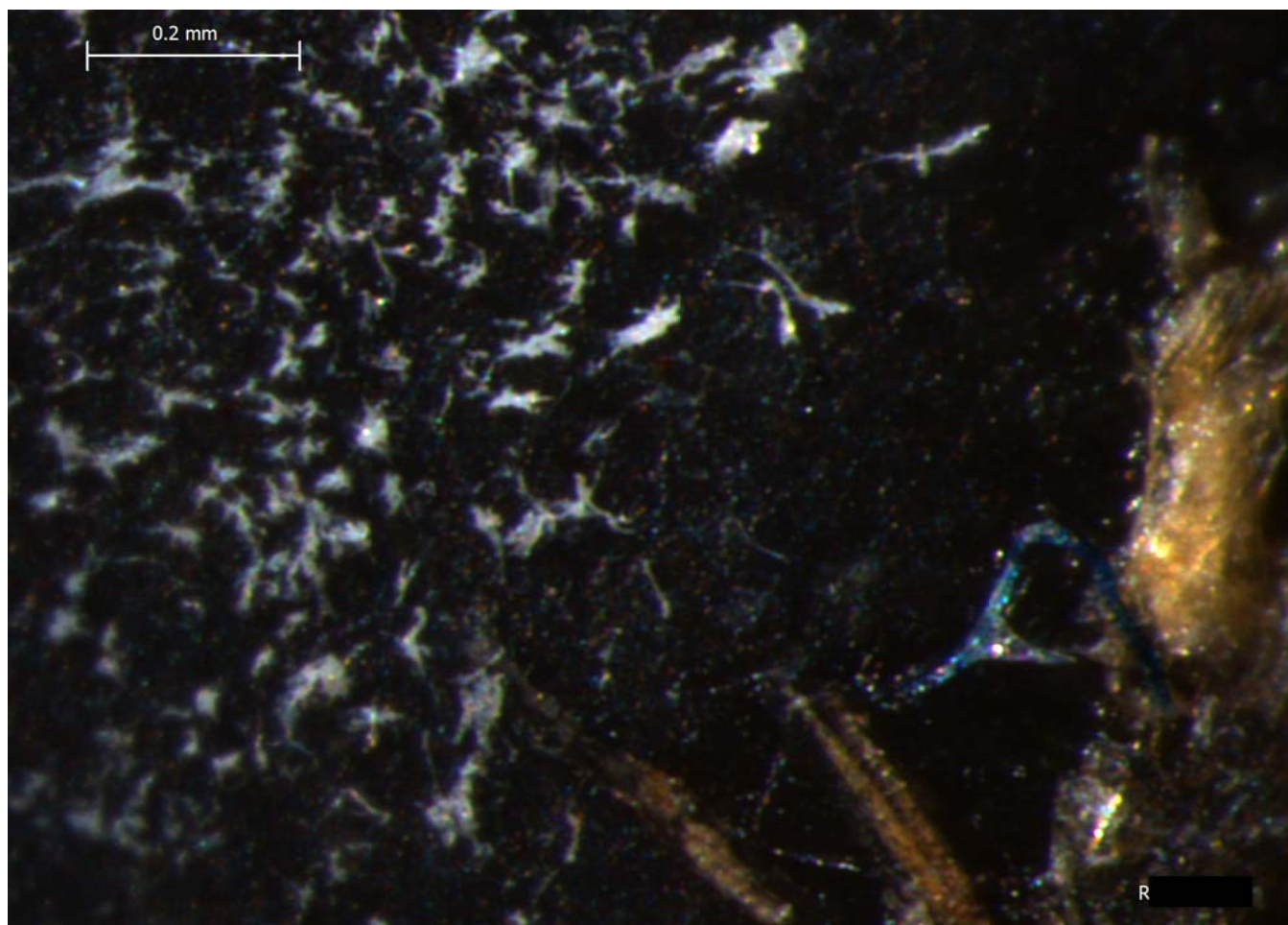
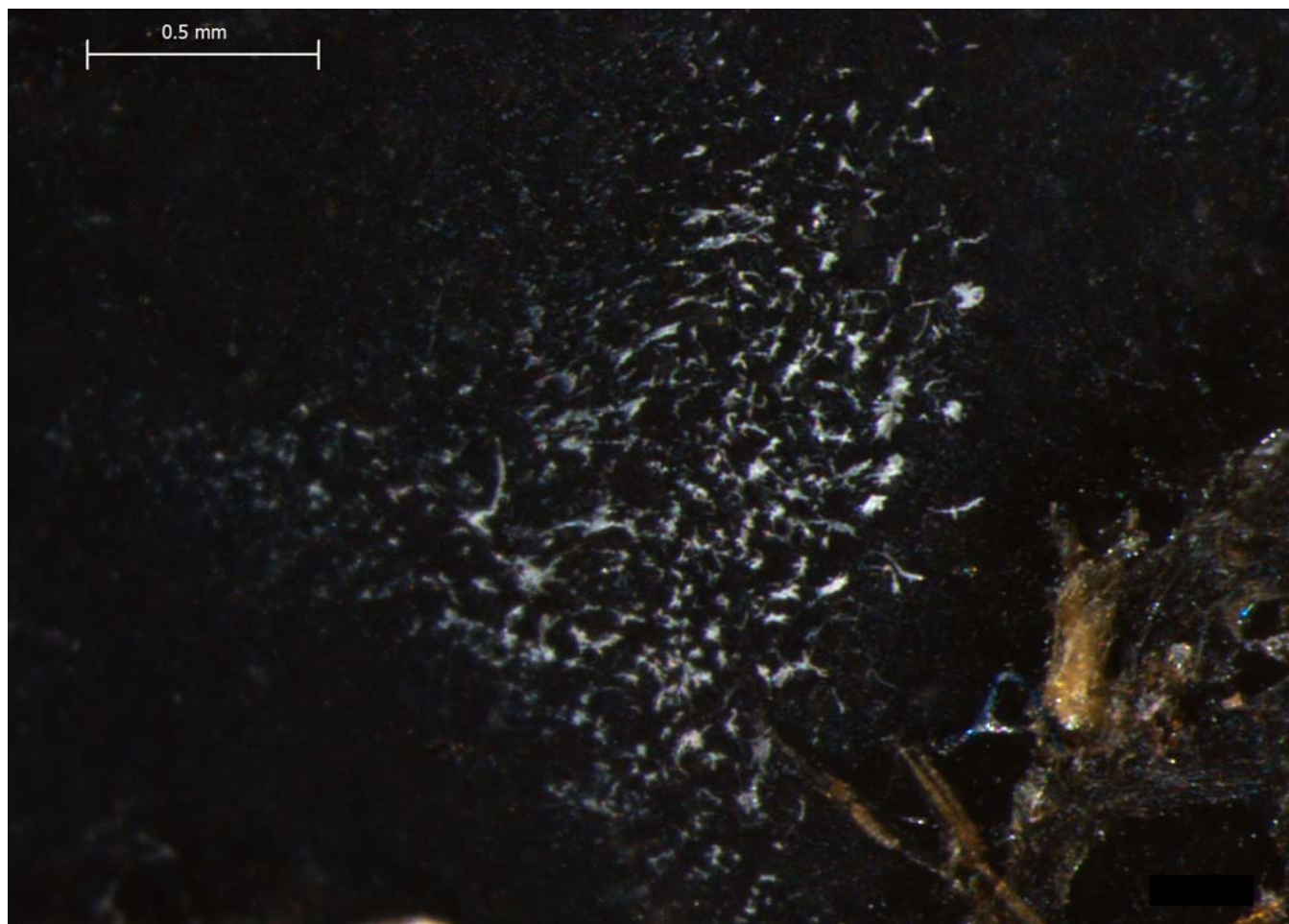






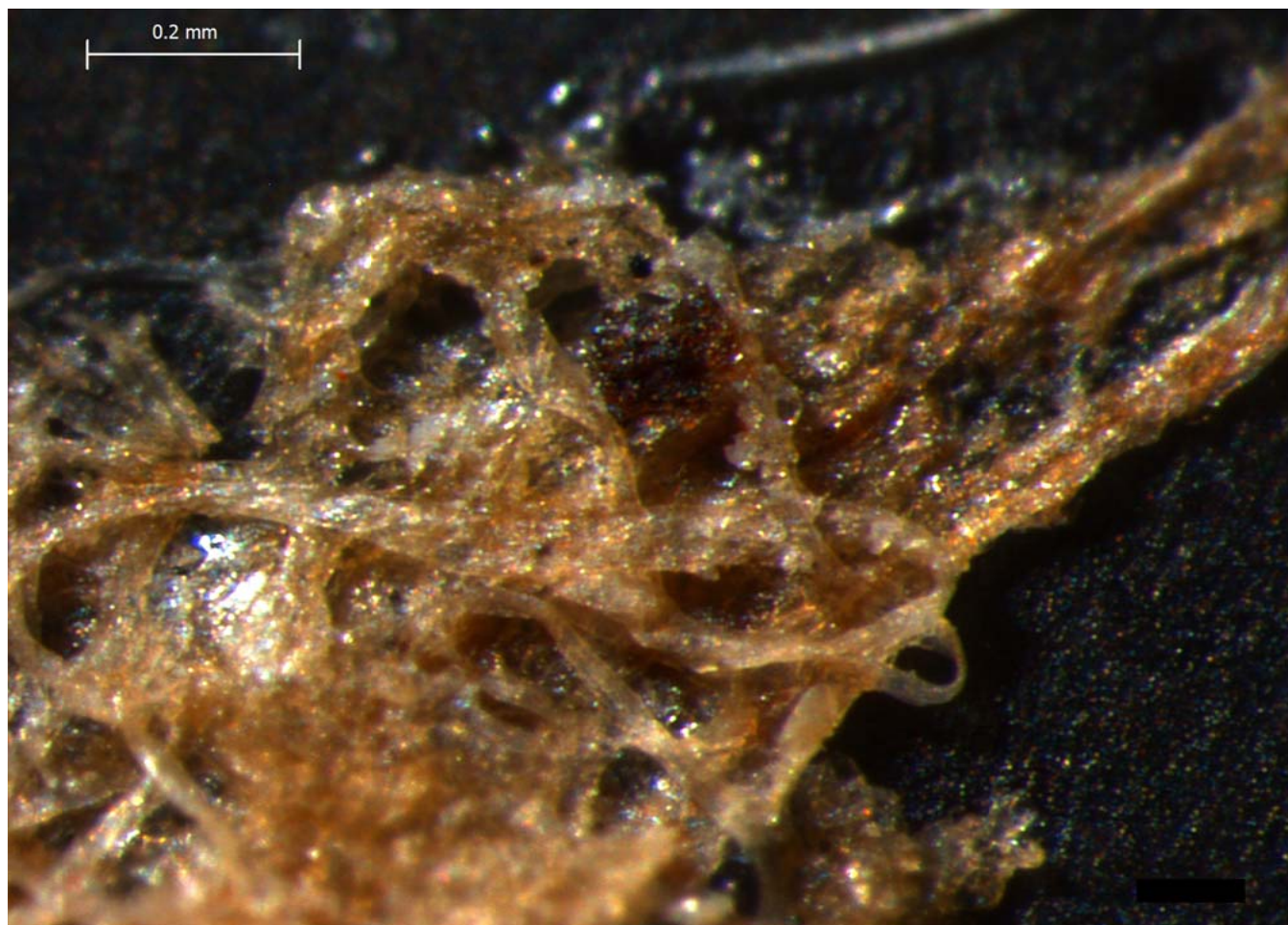
Blind Test 1

Residue 12Vb



Blind Test 1

Residue 12Vc



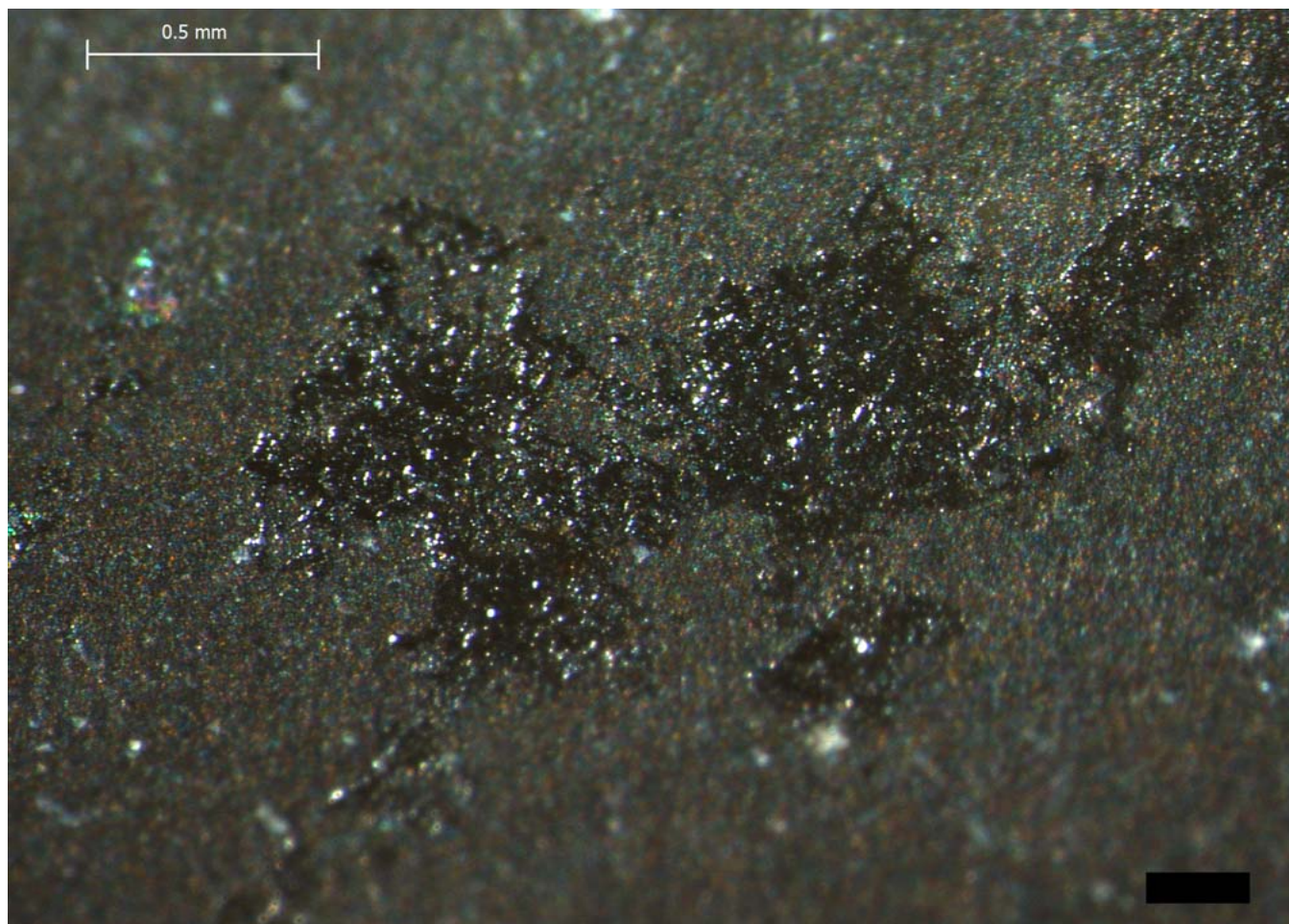
Blind Test 1

Residue 12Vd



Blind Test 1

Residue 12Ve



Blind Test 1

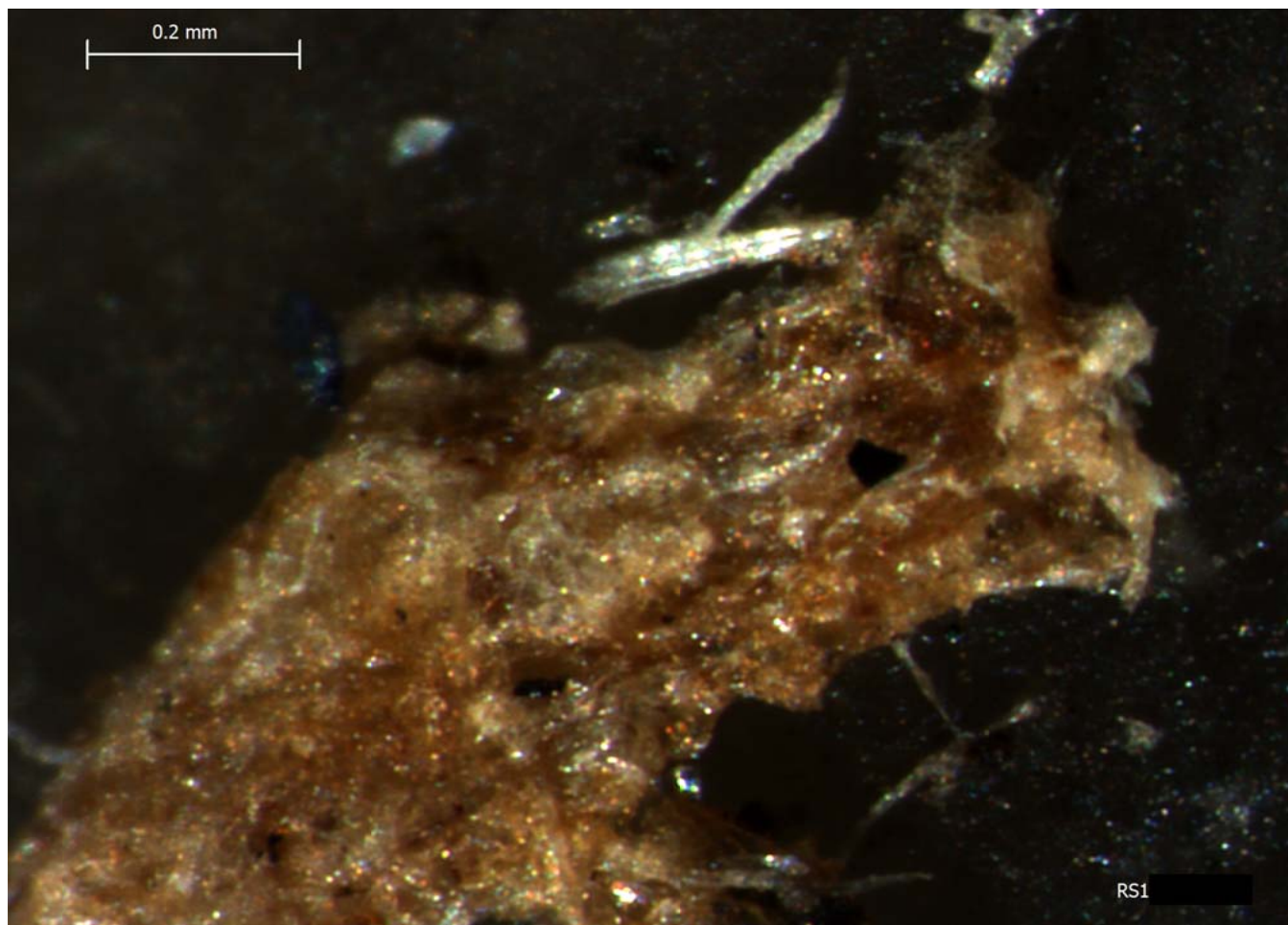
Residue 12Vf



Blind Test 1

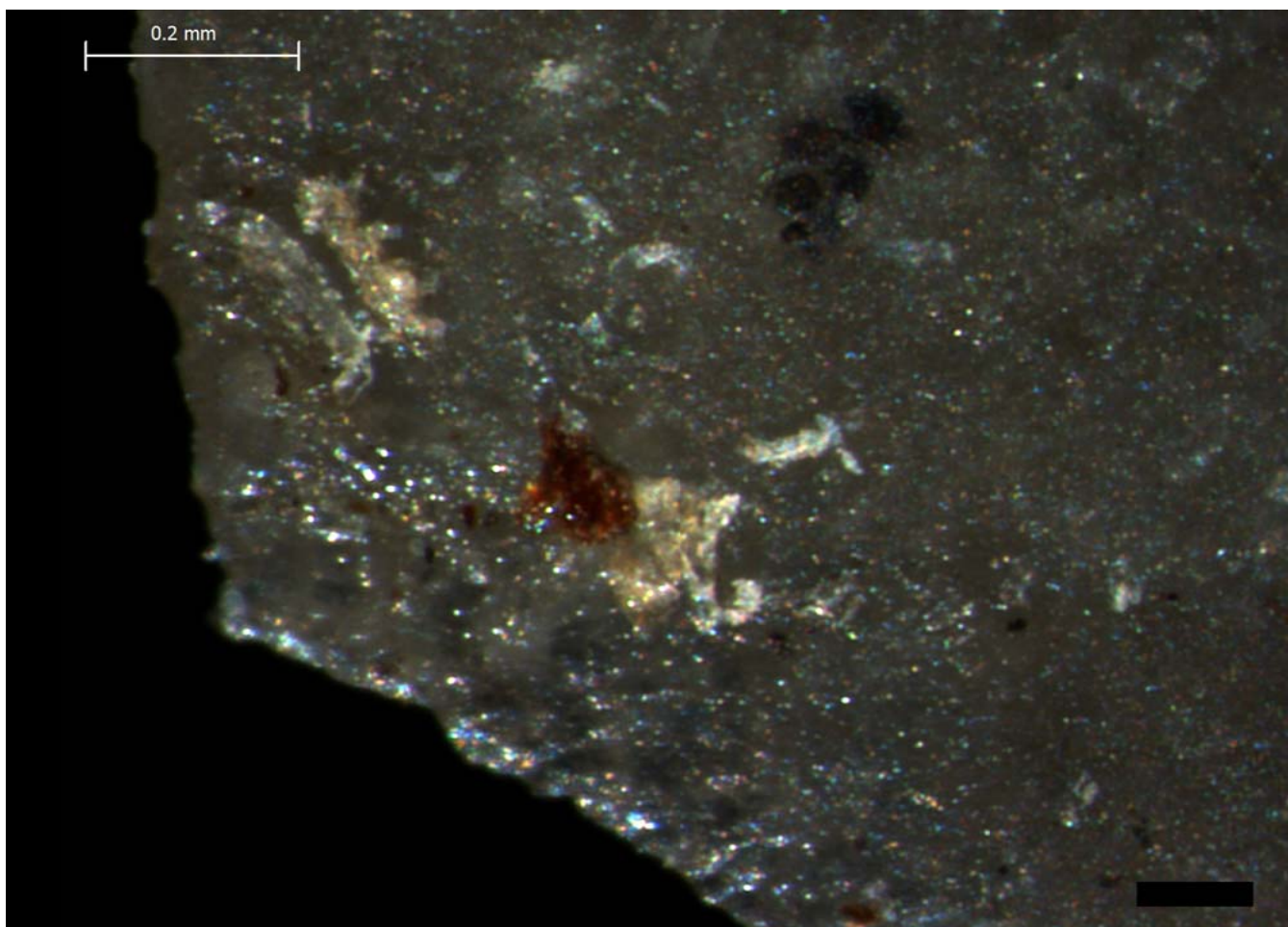
Residue 12Vg





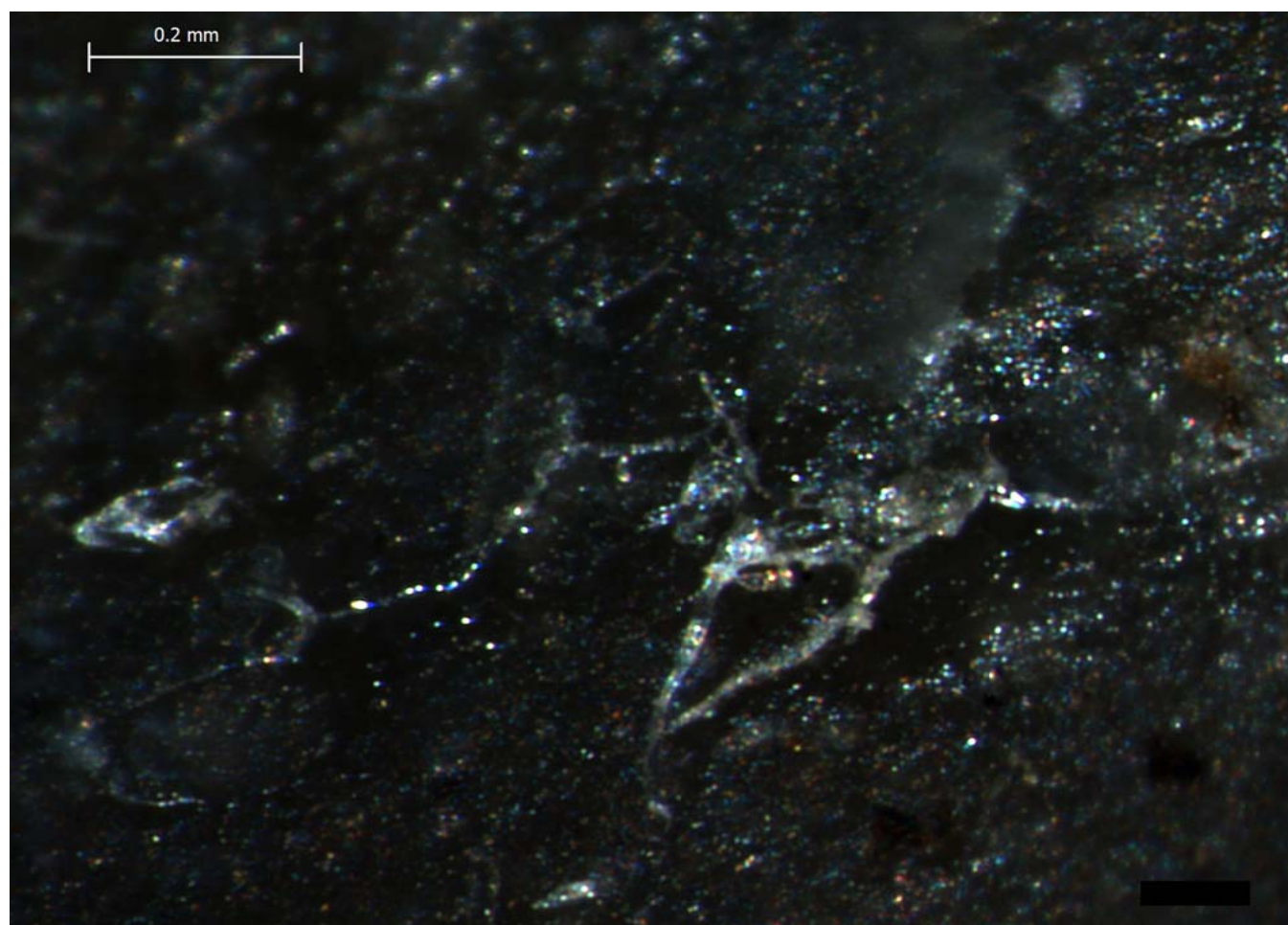
Blind Test 1

Residue 12Vh



Blind Test 1

Residue 12Vi



Blind Test 1

Residue 12Vj



Blind Test 1

Residue 12Vk



